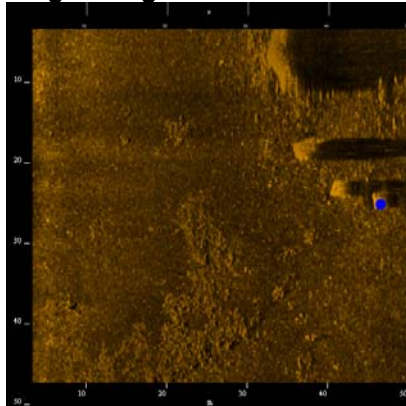


Report Asphalt Pile Reef

Generated on: 4/1/2010 4:41:58 PM by SonarWiz.MAP TargetReportGen (V2.4.1)

Target Image



Target Info

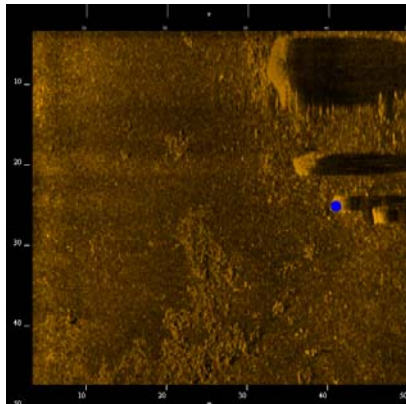
Asphalt0001

- Sonar Time at Target: 09/14/2009 15:16:04
- Click Position (Lat/Lon Coordinates)
37° 44.73571' N 076° 13.38788' W (WGS84)
37° 44.72786' N 076° 13.40801' W (NAD27)
- Click Position (Projected Coordinates)
(X) 392,240.33 (Y) 4,178,293.07
- Map Proj: WGS 1984 UTM, Zone 18 North, Meter
- Acoustic Source File:
I:\Virginia_MS_HD\20090914asphaltpilereef\FILE0001.sds
- Ping Number: 7072
- Range to Target: 46.17 Meters
- Fish Height: 3.83 Meters
- Heading: 0.00000000
- Event Number: 0
- Line Name: FILE0001

User Entered Info

Dimensions

Target Height = 0 Meters
Target Length: 0 Meters
Target Shadow: 0 Meters
Target Width: 0 Meters
Mag Anomaly:
Avoidance Area:
Classification 1: Concrete Pipe
Classification 2:
Area: Asphalt Reef
Block:
Description:

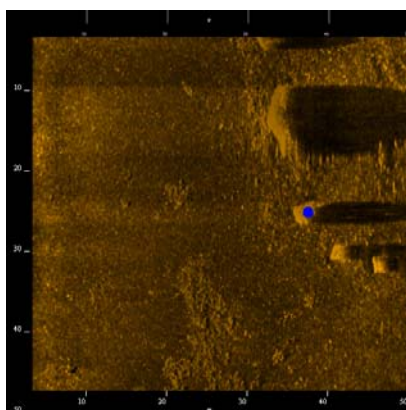


Asphalt0002

- Sonar Time at Target: 09/14/2009 15:16:04
- Click Position (Lat/Lon Coordinates)
37° 44.73667' N 076° 13.39164' W (WGS84)
37° 44.72882' N 076° 13.41176' W (NAD27)
- Click Position (Projected Coordinates)
(X) 392,234.84 (Y) 4,178,294.91
- Map Proj: WGS 1984 UTM, Zone 18 North, Meter
- Acoustic Source File:
I:\Virginia_MS_HD\20090914asphaltpilereef\FILE0001.sds
- Ping Number: 7079
- Range to Target: 40.62 Meters
- Fish Height: 3.83 Meters
- Heading: 0.00000000
- Event Number: 0
- Line Name: FILE0001

Dimensions

Target Height = 0 Meters
Target Length: 0 Meters
Target Shadow: 0 Meters
Target Width: 0 Meters
Mag Anomaly:
Avoidance Area:
Classification 1: Concrete Pipe
Classification 2:
Area: Asphalt Reef
Block:
Description:

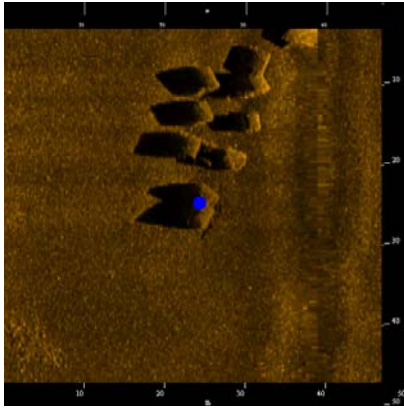


Asphalt0003

- Sonar Time at Target: 09/14/2009 15:16:06
- Click Position (Lat/Lon Coordinates)
37° 44.73963' N 076° 13.39395' W (WGS84)
37° 44.73178' N 076° 13.41407' W (NAD27)
- Click Position (Projected Coordinates)
(X) 392,231.52 (Y) 4,178,300.43
- Map Proj: WGS 1984 UTM, Zone 18 North, Meter
- Acoustic Source File:
I:\Virginia_MS_HD\20090914asphaltpilereef\FILE0001.sds
- Ping Number: 7102
- Range to Target: 37.11 Meters
- Fish Height: 3.83 Meters
- Heading: 0.00000000
- Event Number: 0
- Line Name: FILE0001

Dimensions

Target Height = 0 Meters
Target Length: 0 Meters
Target Shadow: 0 Meters
Target Width: 0 Meters
Mag Anomaly:
Avoidance Area:
Classification 1: Concrete Pipe
Classification 2:
Area: Asphalt Reef
Block:
Description:

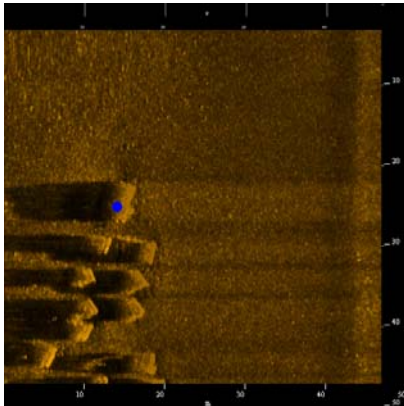


Asphalt0004

- Sonar Time at Target: 09/14/2009 15:25:04
- Click Position (Lat/Lon Coordinates)
37° 44.85153' N 076° 13.37840' W (WGS84)
37° 44.84368' N 076° 13.39852' W (NAD27)
- Click Position (Projected Coordinates)
(X) 392,257.06 (Y) 4,178,507.07
- Map Proj: WGS 1984 UTM, Zone 18 North, Meter
- Acoustic Source File:
I:\Virginia_MS_HD\20090914asphaltpilereef\FILE0001.sds
- Ping Number: 14031
- Range to Target: 13.91 Meters
- Fish Height: 4.42 Meters
- Heading: 0.00000000
- Event Number: 0
- Line Name: FILE0001

Dimensions

Target Height = 0 Meters
 Target Length: 0 Meters
 Target Shadow: 0 Meters
 Target Width: 0 Meters
 Mag Anomaly:
 Avoidance Area:
 Classification 1: Concrete Pipe
 Classification 2:
 Area: Asphalt Reef
 Block:
 Description:

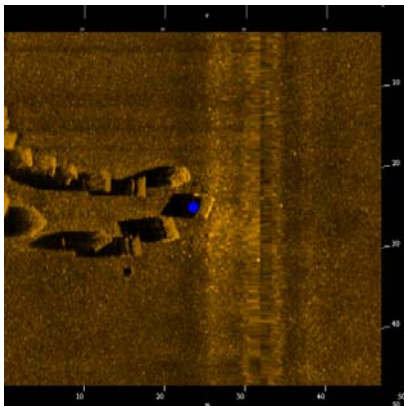


Asphalt0005

- Sonar Time at Target: 09/14/2009 15:36:02
- Click Position (Lat/Lon Coordinates)
37° 44.86116' N 076° 13.37155' W (WGS84)
37° 44.85331' N 076° 13.39167' W (NAD27)
- Click Position (Projected Coordinates)
(X) 392,267.35 (Y) 4,178,524.73
- Map Proj: WGS 1984 UTM, Zone 18 North, Meter
- Acoustic Source File:
I:\Virginia_MS_HD\20090914asphaltpilereef\FILE0001.sds
- Ping Number: 22643
- Range to Target: 35.70 Meters
- Fish Height: 4.62 Meters
- Heading: 0.00000000
- Event Number: 0
- Line Name: FILE0001

Dimensions

Target Height = 0 Meters
 Target Length: 0 Meters
 Target Shadow: 0 Meters
 Target Width: 0 Meters
 Mag Anomaly:
 Avoidance Area:
 Classification 1: Concrete Pipe
 Classification 2:
 Area: Asphalt Reef
 Block:
 Description:

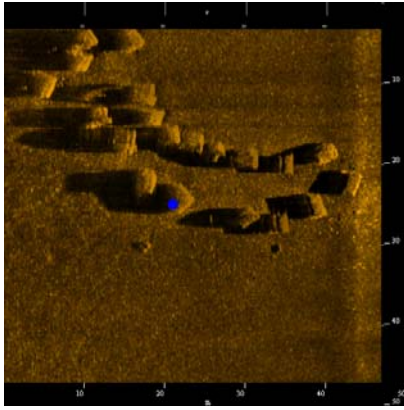


Asphalt0006

- Sonar Time at Target: 09/14/2009 15:35:51
- Click Position (Lat/Lon Coordinates)
37° 44.84356' N 076° 13.35333' W (WGS84)
37° 44.83571' N 076° 13.37345' W (NAD27)
- Click Position (Projected Coordinates)
(X) 392,293.68 (Y) 4,178,491.83
- Map Proj: WGS 1984 UTM, Zone 18 North, Meter
- Acoustic Source File:
I:\Virginia_MS_HD\20090914asphaltpilereef\FILE0001.sds
- Ping Number: 22506
- Range to Target: 6.81 Meters
- Fish Height: 4.67 Meters
- Heading: 0.00000000
- Event Number: 0
- Line Name: FILE0001

Dimensions

Target Height = 0 Meters
 Target Length: 0 Meters
 Target Shadow: 0 Meters
 Target Width: 0 Meters
 Mag Anomaly:
 Avoidance Area:
 Classification 1: Concrete Pipe
 Classification 2:
 Area: Asphalt Reef
 Block:
 Description:

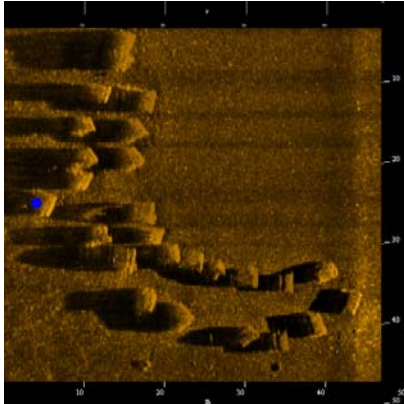


Asphalt0007

- Sonar Time at Target: 09/14/2009 15:35:51
- Click Position (Lat/Lon Coordinates)
37° 44.84307' N 076° 13.36831' W (WGS84)
37° 44.83522' N 076° 13.38844' W (NAD27)
- Click Position (Projected Coordinates)
(X) 392,271.67 (Y) 4,178,491.22
- Map Proj: WGS 1984 UTM, Zone 18 North, Meter
- Acoustic Source File:
I:\Virginia_MS_HD\20090914asphaltpilereef\FILE0001.sds
- Ping Number: 22495
- Range to Target: 28.69 Meters
- Fish Height: 4.67 Meters
- Heading: 0.00000000
- Event Number: 0
- Line Name: FILE0001

Dimensions

Target Height = 0 Meters
 Target Length: 0 Meters
 Target Shadow: 0 Meters
 Target Width: 0 Meters
 Mag Anomaly:
 Avoidance Area:
 Classification 1: Concrete Pipe
 Classification 2:
 Area: Asphalt Reef
 Block:
 Description:

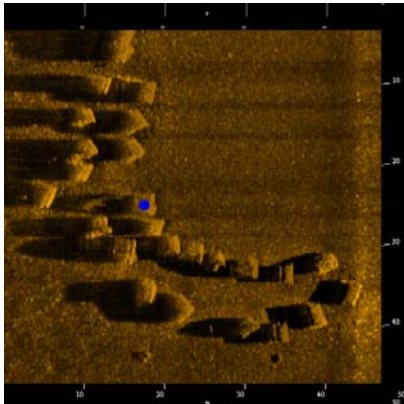


Asphalt0008

- Sonar Time at Target: 09/14/2009 15:35:56
- Click Position (Lat/Lon Coordinates)
37° 44.85169' N 076° 13.37916' W (WGS84)
37° 44.84384' N 076° 13.39929' W (NAD27)
- Click Position (Projected Coordinates)
(X) 392,255.94 (Y) 4,178,507.37
- Map Proj: WGS 1984 UTM, Zone 18 North, Meter
- Acoustic Source File:
I:\Virginia_MS_HD\20090914asphaltpilereef\FILE0001.sds
- Ping Number: 22561
- Range to Target: 45.71 Meters
- Fish Height: 4.65 Meters
- Heading: 0.00000000
- Event Number: 0
- Line Name: FILE0001

Dimensions

Target Height = 0 Meters
 Target Length: 0 Meters
 Target Shadow: 0 Meters
 Target Width: 0 Meters
 Mag Anomaly:
 Avoidance Area:
 Classification 1: Concrete Pipe
 Classification 2:
 Area: Asphalt Reef
 Block:
 Description:

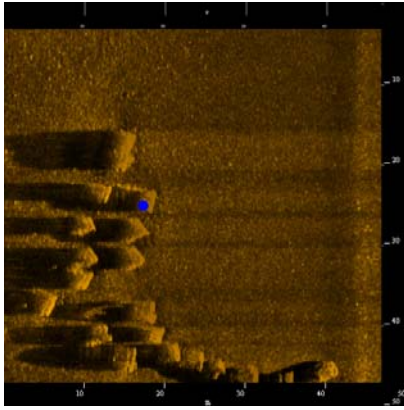


Asphalt0009

- Sonar Time at Target: 09/14/2009 15:35:55
- Click Position (Lat/Lon Coordinates)
37° 44.85047' N 076° 13.37011' W (WGS84)
37° 44.84262' N 076° 13.39023' W (NAD27)
- Click Position (Projected Coordinates)
(X) 392,269.21 (Y) 4,178,504.94
- Map Proj: WGS 1984 UTM, Zone 18 North, Meter
- Acoustic Source File:
I:\Virginia_MS_HD\20090914asphaltpilereef\FILE0001.sds
- Ping Number: 22555
- Range to Target: 32.29 Meters
- Fish Height: 4.65 Meters
- Heading: 0.00000000
- Event Number: 0
- Line Name: FILE0001

Dimensions

Target Height = 0 Meters
 Target Length: 0 Meters
 Target Shadow: 0 Meters
 Target Width: 0 Meters
 Mag Anomaly:
 Avoidance Area:
 Classification 1: Concrete Pipe
 Classification 2:
 Area: Asphalt Reef
 Block:
 Description:

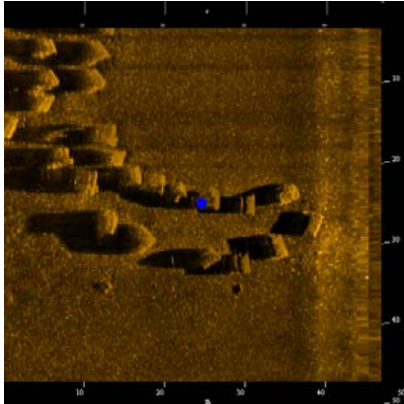


Asphalt0010

- Sonar Time at Target: 09/14/2009 15:36:00
- Click Position (Lat/Lon Coordinates)
37° 44.85769' N 076° 13.36957' W (WGS84)
37° 44.84984' N 076° 13.38969' W (NAD27)
- Click Position (Projected Coordinates)
(X) 392,270.18 (Y) 4,178,518.28
- Map Proj: WGS 1984 UTM, Zone 18 North, Meter
- Acoustic Source File:
I:\Virginia_MS_HD\20090914asphaltpilereef\FILE0001.sds
- Ping Number: 22615
- Range to Target: 32.39 Meters
- Fish Height: 4.63 Meters
- Heading: 0.00000000
- Event Number: 0
- Line Name: FILE0001

Dimensions

Target Height = 0 Meters
Target Length: 0 Meters
Target Shadow: 0 Meters
Target Width: 0 Meters
Mag Anomaly:
Avoidance Area:
Classification 1: Concrete Pipe
Classification 2:
Area: Asphalt Reef
Block:
Description:

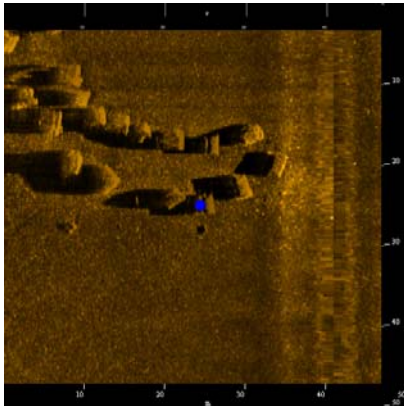


Asphalt0011

- Sonar Time at Target: 09/14/2009 15:35:52
- Click Position (Lat/Lon Coordinates)
37° 44.84553' N 076° 13.36231' W (WGS84)
37° 44.83768' N 076° 13.38244' W (NAD27)
- Click Position (Projected Coordinates)
(X) 392,280.54 (Y) 4,178,495.66
- Map Proj: WGS 1984 UTM, Zone 18 North, Meter
- Acoustic Source File:
I:\Virginia_MS_HD\20090914asphaltpilereef\FILE0001.sds
- Ping Number: 22518
- Range to Target: 20.23 Meters
- Fish Height: 4.66 Meters
- Heading: 0.00000000
- Event Number: 0
- Line Name: FILE0001

Dimensions

Target Height = 0 Meters
Target Length: 0 Meters
Target Shadow: 0 Meters
Target Width: 0 Meters
Mag Anomaly:
Avoidance Area:
Classification 1: Concrete Pipe
Classification 2:
Area: Asphalt Reef
Block:
Description:

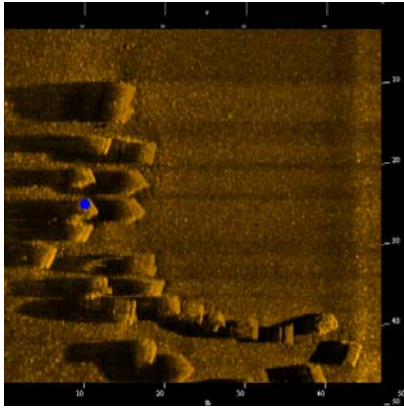


Asphalt0012

- Sonar Time at Target: 09/14/2009 15:35:50
- Click Position (Lat/Lon Coordinates)
37° 44.84123' N 076° 13.35971' W (WGS84)
37° 44.83338' N 076° 13.37984' W (NAD27)
- Click Position (Projected Coordinates)
(X) 392,284.25 (Y) 4,178,487.66
- Map Proj: WGS 1984 UTM, Zone 18 North, Meter
- Acoustic Source File:
I:\Virginia_MS_HD\20090914asphaltpilereef\FILE0001.sds
- Ping Number: 22484
- Range to Target: 15.85 Meters
- Fish Height: 4.68 Meters
- Heading: 0.00000000
- Event Number: 0
- Line Name: FILE0001

Dimensions

Target Height = 0 Meters
Target Length: 0 Meters
Target Shadow: 0 Meters
Target Width: 0 Meters
Mag Anomaly:
Avoidance Area:
Classification 1: Concrete Pipe
Classification 2:
Area: Asphalt Reef
Block:
Description:

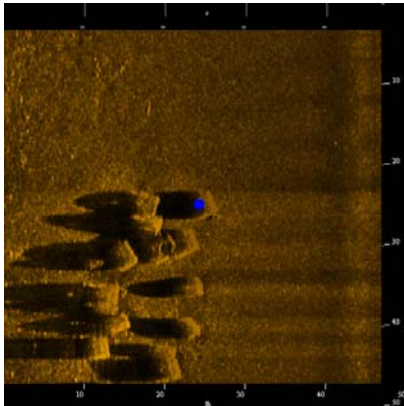


Asphalt0013

- Sonar Time at Target: 09/14/2009 15:35:58
- Click Position (Lat/Lon Coordinates)
37° 44.85483' N 076° 13.37478' W (WGS84)
37° 44.84698' N 076° 13.39490' W (NAD27)
- Click Position (Projected Coordinates)
(X) 392,262.45 (Y) 4,178,513.09
- Map Proj: WGS 1984 UTM, Zone 18 North, Meter
- Acoustic Source File:
I:\Virginia_MS_HD\20090914asphaltpilereef\FILE0001.sds
- Ping Number: 22589
- Range to Target: 39.68 Meters
- Fish Height: 4.64 Meters
- Heading: 0.00000000
- Event Number: 0
- Line Name: FILE0001

Dimensions

Target Height = 0 Meters
Target Length: 0 Meters
Target Shadow: 0 Meters
Target Width: 0 Meters
Mag Anomaly:
Avoidance Area:
Classification 1: Concrete Pipe
Classification 2:
Area: Asphalt Reef
Block:
Description:

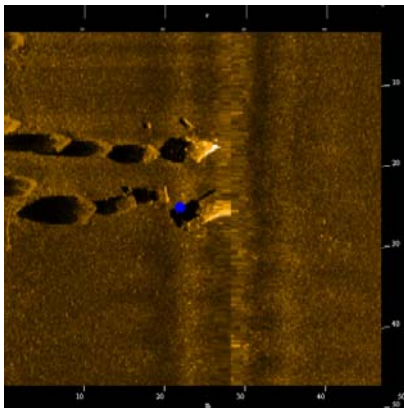


Asphalt0014

- Sonar Time at Target: 09/14/2009 15:35:31
- Click Position (Lat/Lon Coordinates)
37° 44.81168' N 076° 13.36877' W (WGS84)
37° 44.80383' N 076° 13.38890' W (NAD27)
- Click Position (Projected Coordinates)
(X) 392,270.23 (Y) 4,178,433.18
- Map Proj: WGS 1984 UTM, Zone 18 North, Meter
- Acoustic Source File:
I:\Virginia_MS_HD\20090914asphaltpilereef\FILE0001.sds
- Ping Number: 22239
- Range to Target: 25.26 Meters
- Fish Height: 5.21 Meters
- Heading: 0.00000000
- Event Number: 0
- Line Name: FILE0001

Dimensions

Target Height = 0 Meters
Target Length: 0 Meters
Target Shadow: 0 Meters
Target Width: 0 Meters
Mag Anomaly:
Avoidance Area:
Classification 1: Concrete Pipe
Classification 2:
Area: Asphalt Reef
Block:
Description:

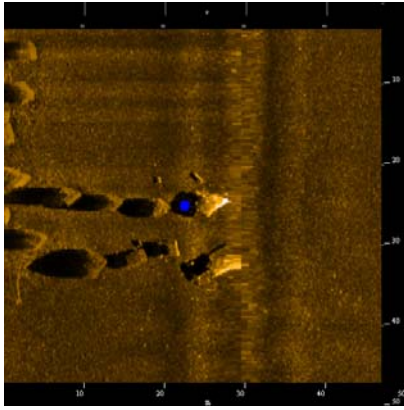


Asphalt0015

- Sonar Time at Target: 09/14/2009 15:35:19
- Click Position (Lat/Lon Coordinates)
37° 44.79123' N 076° 13.35468' W (WGS84)
37° 44.78338' N 076° 13.37480' W (NAD27)
- Click Position (Projected Coordinates)
(X) 392,290.43 (Y) 4,178,395.10
- Map Proj: WGS 1984 UTM, Zone 18 North, Meter
- Acoustic Source File:
I:\Virginia_MS_HD\20090914asphaltpilereef\FILE0001.sds
- Ping Number: 22077
- Range to Target: 3.20 Meters
- Fish Height: 5.39 Meters
- Heading: 0.00000000
- Event Number: 0
- Line Name: FILE0001

Dimensions

Target Height = 0 Meters
Target Length: 0 Meters
Target Shadow: 0 Meters
Target Width: 0 Meters
Mag Anomaly:
Avoidance Area:
Classification 1: Concrete Pipe
Classification 2:
Area: Asphalt Reef
Block:
Description:

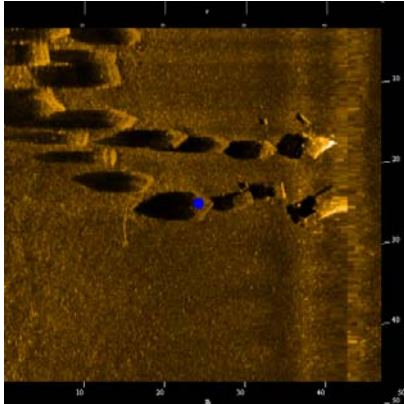


Asphalt0016

- Sonar Time at Target: 09/14/2009 15:35:21
- Click Position (Lat/Lon Coordinates)
37° 44.79504' N 076° 13.35547' W (WGS84)
37° 44.78719' N 076° 13.37560' W (NAD27)
- Click Position (Projected Coordinates)
(X) 392,289.36 (Y) 4,178,402.16
- Map Proj: WGS 1984 UTM, Zone 18 North, Meter
- Acoustic Source File:
I:\Virginia_MS_HD\20090914asphaltpilereef\FILE0001.sds
- Ping Number: 22108
- Range to Target: 4.47 Meters
- Fish Height: 5.34 Meters
- Heading: 0.00000000
- Event Number: 0
- Line Name: FILE0001

Dimensions

Target Height = 0 Meters
Target Length: 0 Meters
Target Shadow: 0 Meters
Target Width: 0 Meters
Mag Anomaly:
Avoidance Area:
Classification 1: Concrete Pipe
Classification 2:
Area: Asphalt Reef
Block:
Description:

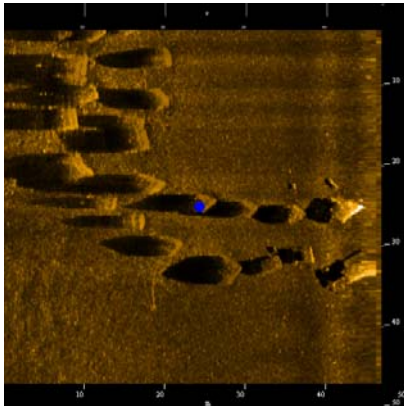


Asphalt0017

- Sonar Time at Target: 09/14/2009 15:35:19
- Click Position (Lat/Lon Coordinates)
37° 44.79129' N 076° 13.36453' W (WGS84)
37° 44.78344' N 076° 13.38466' W (NAD27)
- Click Position (Projected Coordinates)
(X) 392,275.96 (Y) 4,178,395.40
- Map Proj: WGS 1984 UTM, Zone 18 North, Meter
- Acoustic Source File:
I:\Virginia_MS_HD\20090914asphaltpilereef\FILE0001.sds
- Ping Number: 22077
- Range to Target: 17.68 Meters
- Fish Height: 5.39 Meters
- Heading: 0.00000000
- Event Number: 0
- Line Name: FILE0001

Dimensions

Target Height = 0 Meters
Target Length: 0 Meters
Target Shadow: 0 Meters
Target Width: 0 Meters
Mag Anomaly:
Avoidance Area:
Classification 1: Concrete Pipe
Classification 2:
Area: Asphalt Reef
Block:
Description:

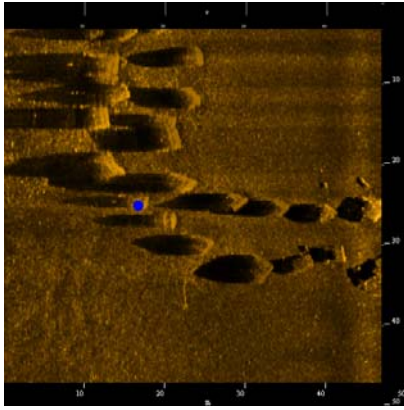


Asphalt0018

- Sonar Time at Target: 09/14/2009 15:35:21
- Click Position (Lat/Lon Coordinates)
37° 44.79560' N 076° 13.36684' W (WGS84)
37° 44.78775' N 076° 13.38696' W (NAD27)
- Click Position (Projected Coordinates)
(X) 392,272.68 (Y) 4,178,403.41
- Map Proj: WGS 1984 UTM, Zone 18 North, Meter
- Acoustic Source File:
I:\Virginia_MS_HD\20090914asphaltpilereef\FILE0001.sds
- Ping Number: 22111
- Range to Target: 21.17 Meters
- Fish Height: 5.34 Meters
- Heading: 0.00000000
- Event Number: 0
- Line Name: FILE0001

Dimensions

Target Height = 0 Meters
Target Length: 0 Meters
Target Shadow: 0 Meters
Target Width: 0 Meters
Mag Anomaly:
Avoidance Area:
Classification 1: Concrete Pipe
Classification 2:
Area: Asphalt Reef
Block:
Description:

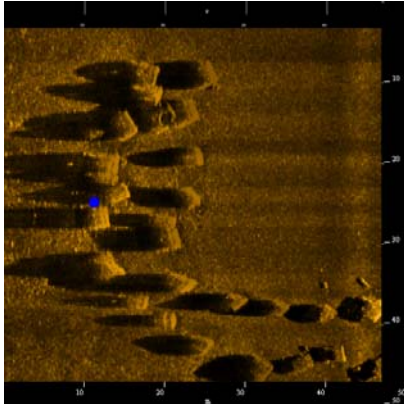


Asphalt0019

- Sonar Time at Target: 09/14/2009 15:35:21
- Click Position (Lat/Lon Coordinates)
37° 44.79573' N 076° 13.37484' W (WGS84)
37° 44.78788' N 076° 13.39496' W (NAD27)
- Click Position (Projected Coordinates)
(X) 392,260.94 (Y) 4,178,403.81
- Map Proj: WGS 1984 UTM, Zone 18 North, Meter
- Acoustic Source File:
I:\Virginia_MS_HD\20090914asphaltpilereef\FILE0001.sds
- Ping Number: 22111
- Range to Target: 32.93 Meters
- Fish Height: 5.34 Meters
- Heading: 0.00000000
- Event Number: 0
- Line Name: FILE0001

Dimensions

Target Height = 0 Meters
Target Length: 0 Meters
Target Shadow: 0 Meters
Target Width: 0 Meters
Mag Anomaly:
Avoidance Area:
Classification 1: Concrete Pipe
Classification 2:
Area: Asphalt Reef
Block:
Description:

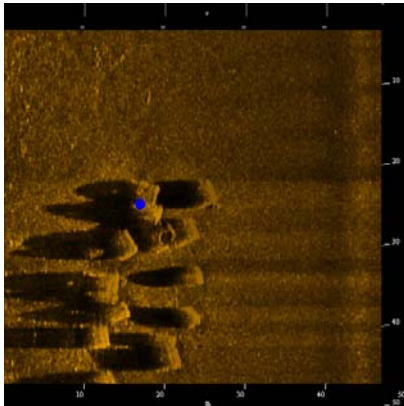


Asphalt0020

- Sonar Time at Target: 09/14/2009 15:35:26
- Click Position (Lat/Lon Coordinates)
37° 44.80312' N 076° 13.37832' W (WGS84)
37° 44.79527' N 076° 13.39845' W (NAD27)
- Click Position (Projected Coordinates)
(X) 392,256.00 (Y) 4,178,417.55
- Map Proj: WGS 1984 UTM, Zone 18 North, Meter
- Acoustic Source File:
I:\Virginia_MS_HD\20090914asphaltpilereef\FILE0001.sds
- Ping Number: 22168
- Range to Target: 38.47 Meters
- Fish Height: 5.26 Meters
- Heading: 0.00000000
- Event Number: 0
- Line Name: FILE0001

Dimensions

Target Height = 0 Meters
Target Length: 0 Meters
Target Shadow: 0 Meters
Target Width: 0 Meters
Mag Anomaly:
Avoidance Area:
Classification 1: Concrete Pipe
Classification 2:
Area: Asphalt Reef
Block:
Description:

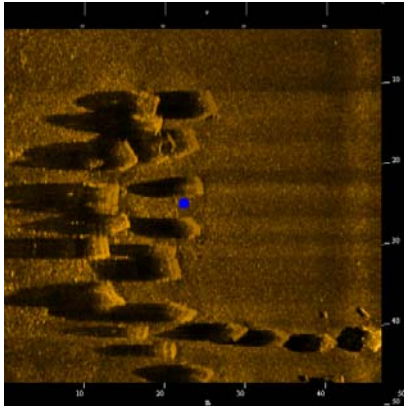


Asphalt0021

- Sonar Time at Target: 09/14/2009 15:35:31
- Click Position (Lat/Lon Coordinates)
37° 44.81117' N 076° 13.37391' W (WGS84)
37° 44.80332' N 076° 13.39404' W (NAD27)
- Click Position (Projected Coordinates)
(X) 392,262.67 (Y) 4,178,432.34
- Map Proj: WGS 1984 UTM, Zone 18 North, Meter
- Acoustic Source File:
I:\Virginia_MS_HD\20090914asphaltpilereef\FILE0001.sds
- Ping Number: 22233
- Range to Target: 32.74 Meters
- Fish Height: 5.21 Meters
- Heading: 0.00000000
- Event Number: 0
- Line Name: FILE0001

Dimensions

Target Height = 0 Meters
Target Length: 0 Meters
Target Shadow: 0 Meters
Target Width: 0 Meters
Mag Anomaly:
Avoidance Area:
Classification 1: Concrete Pipe
Classification 2:
Area: Asphalt Reef
Block:
Description:

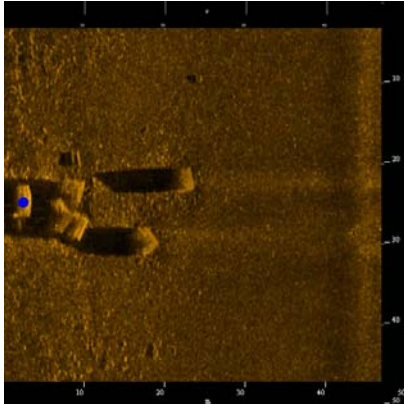


Asphalt0022

- Sonar Time at Target: 09/14/2009 15:35:27
- Click Position (Lat/Lon Coordinates)
37° 44.80488' N 076° 13.37055' W (WGS84)
37° 44.79703' N 076° 13.39067' W (NAD27)
- Click Position (Projected Coordinates)
(X) 392,267.46 (Y) 4,178,420.65
- Map Proj: WGS 1984 UTM, Zone 18 North, Meter
- Acoustic Source File:
I:\Virginia_MS_HD\20090914asphaltpilereef\FILE0001.sds
- Ping Number: 22184
- Range to Target: 27.20 Meters
- Fish Height: 5.24 Meters
- Heading: 0.00000000
- Event Number: 0
- Line Name: FILE0001

Dimensions

Target Height = 0 Meters
Target Length: 0 Meters
Target Shadow: 0 Meters
Target Width: 0 Meters
Mag Anomaly:
Avoidance Area:
Classification 1: Concrete Pipe
Classification 2:
Area: Asphalt Reef
Block:
Description:

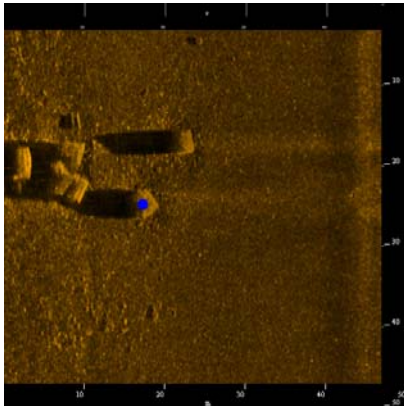


Asphalt0023

- Sonar Time at Target: 09/14/2009 15:34:46
- Click Position (Lat/Lon Coordinates)
37° 44.73778' N 076° 13.38296' W (WGS84)
37° 44.72993' N 076° 13.40309' W (NAD27)
- Click Position (Projected Coordinates)
(X) 392,247.61 (Y) 4,178,296.80
- Map Proj: WGS 1984 UTM, Zone 18 North, Meter
- Acoustic Source File:
I:\Virginia_MS_HD\20090914asphaltpilereef\FILE0001.sds
- Ping Number: 21642
- Range to Target: 47.32 Meters
- Fish Height: 5.21 Meters
- Heading: 0.00000000
- Event Number: 0
- Line Name: FILE0001

Dimensions

Target Height = 0 Meters
Target Length: 0 Meters
Target Shadow: 0 Meters
Target Width: 0 Meters
Mag Anomaly:
Avoidance Area:
Classification 1: Concrete Pipe
Classification 2:
Area: Asphalt Reef
Block:
Description:

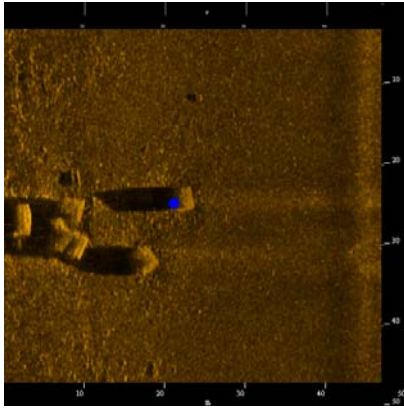


Asphalt0024

- Sonar Time at Target: 09/14/2009 15:34:44
- Click Position (Lat/Lon Coordinates)
37° 44.73524' N 076° 13.37275' W (WGS84)
37° 44.72739' N 076° 13.39287' W (NAD27)
- Click Position (Projected Coordinates)
(X) 392,262.55 (Y) 4,178,291.90
- Map Proj: WGS 1984 UTM, Zone 18 North, Meter
- Acoustic Source File:
I:\Virginia_MS_HD\20090914asphaltpilereef\FILE0001.sds
- Ping Number: 21620
- Range to Target: 32.35 Meters
- Fish Height: 5.19 Meters
- Heading: 0.00000000
- Event Number: 0
- Line Name: FILE0001

Dimensions

Target Height = 0 Meters
Target Length: 0 Meters
Target Shadow: 0 Meters
Target Width: 0 Meters
Mag Anomaly:
Avoidance Area:
Classification 1: Concrete Pipe
Classification 2:
Area: Asphalt Reef
Block:
Description:

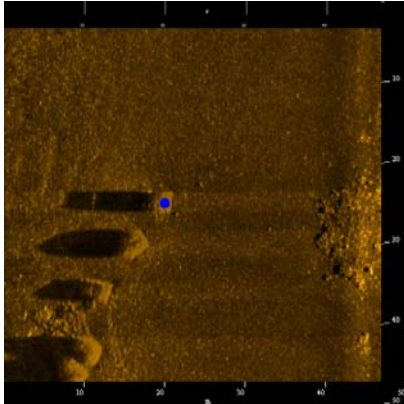


Asphalt0025

- Sonar Time at Target: 09/14/2009 15:34:46
- Click Position (Lat/Lon Coordinates)
37° 44.73908' N 076° 13.37015' W (WGS84)
37° 44.73123' N 076° 13.39027' W (NAD27)
- Click Position (Projected Coordinates)
(X) 392,266.46 (Y) 4,178,298.96
- Map Proj: WGS 1984 UTM, Zone 18 North, Meter
- Acoustic Source File:
I:\Virginia_MS_HD\20090914asphaltpilereef\FILE0001.sds
- Ping Number: 21652
- Range to Target: 28.47 Meters
- Fish Height: 5.21 Meters
- Heading: 0.00000000
- Event Number: 0
- Line Name: FILE0001

Dimensions

Target Height = 0 Meters
Target Length: 0 Meters
Target Shadow: 0 Meters
Target Width: 0 Meters
Mag Anomaly:
Avoidance Area:
Classification 1: Concrete Pipe
Classification 2:
Area: Asphalt Reef
Block:
Description:

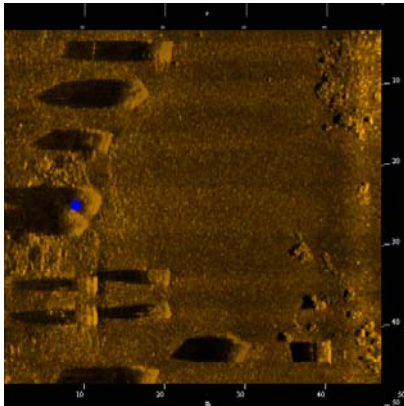


Asphalt0026

- Sonar Time at Target: 09/14/2009 15:34:28
- Click Position (Lat/Lon Coordinates)
37° 44.70986' N 076° 13.37087' W (WGS84)
37° 44.70201' N 076° 13.39099' W (NAD27)
- Click Position (Projected Coordinates)
(X) 392,264.69 (Y) 4,178,244.93
- Map Proj: WGS 1984 UTM, Zone 18 North, Meter
- Acoustic Source File:
I:\Virginia_MS_HD\20090914asphaltpilereef\FILE0001.sds
- Ping Number: 21410
- Range to Target: 29.64 Meters
- Fish Height: 5.08 Meters
- Heading: 0.00000000
- Event Number: 0
- Line Name: FILE0001

Dimensions

Target Height = 0 Meters
Target Length: 0 Meters
Target Shadow: 0 Meters
Target Width: 0 Meters
Mag Anomaly:
Avoidance Area:
Classification 1: Concrete Pipe
Classification 2:
Area: Asphalt Reef
Block:
Description:

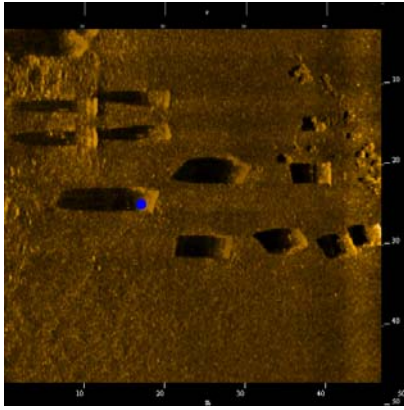


Asphalt0027

- Sonar Time at Target: 09/14/2009 15:34:22
- Click Position (Lat/Lon Coordinates)
37° 44.69960' N 076° 13.37849' W (WGS84)
37° 44.69175' N 076° 13.39861' W (NAD27)
- Click Position (Projected Coordinates)
(X) 392,253.26 (Y) 4,178,226.12
- Map Proj: WGS 1984 UTM, Zone 18 North, Meter
- Acoustic Source File:
I:\Virginia_MS_HD\20090914asphaltpilereef\FILE0001.sds
- Ping Number: 21326
- Range to Target: 40.80 Meters
- Fish Height: 5.25 Meters
- Heading: 0.00000000
- Event Number: 0
- Line Name: FILE0001

Dimensions

Target Height = 0 Meters
Target Length: 0 Meters
Target Shadow: 0 Meters
Target Width: 0 Meters
Mag Anomaly:
Avoidance Area:
Classification 1: Concrete Pipe
Classification 2:
Area: Asphalt Reef
Block:
Description:

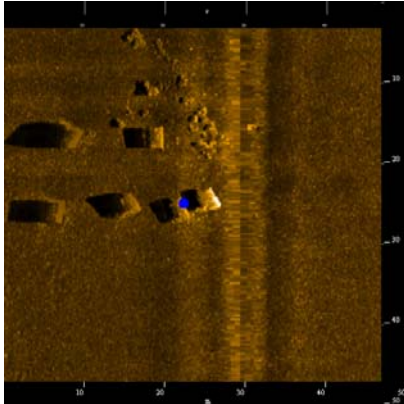


Asphalt0028

- Sonar Time at Target: 09/14/2009 15:34:14
- Click Position (Lat/Lon Coordinates)
37° 44.68759' N 076° 13.37285' W (WGS84)
37° 44.67974' N 076° 13.39297' W (NAD27)
- Click Position (Projected Coordinates)
(X) 392,261.25 (Y) 4,178,203.80
- Map Proj: WGS 1984 UTM, Zone 18 North, Meter
- Acoustic Source File:
I:\Virginia_MS_HD\20090914asphaltpilereef\FILE0001.sds
- Ping Number: 21228
- Range to Target: 32.53 Meters
- Fish Height: 5.45 Meters
- Heading: 0.00000000
- Event Number: 0
- Line Name: FILE0001

Dimensions

Target Height = 0 Meters
 Target Length: 0 Meters
 Target Shadow: 0 Meters
 Target Width: 0 Meters
 Mag Anomaly:
 Avoidance Area:
 Classification 1: Concrete Pipe
 Classification 2:
 Area: Asphalt Reef
 Block:
 Description:

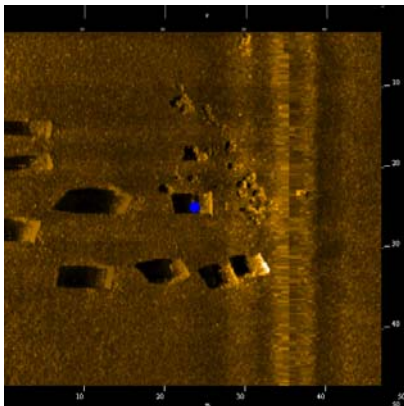


Asphalt0029

- Sonar Time at Target: 09/14/2009 15:34:13
- Click Position (Lat/Lon Coordinates)
37° 44.68529' N 076° 13.35367' W (WGS84)
37° 44.67744' N 076° 13.37379' W (NAD27)
- Click Position (Projected Coordinates)
(X) 392,289.36 (Y) 4,178,199.18
- Map Proj: WGS 1984 UTM, Zone 18 North, Meter
- Acoustic Source File:
I:\Virginia_MS_HD\20090914asphaltpilereef\FILE0001.sds
- Ping Number: 21209
- Range to Target: 4.37 Meters
- Fish Height: 5.48 Meters
- Heading: 0.00000000
- Event Number: 0
- Line Name: FILE0001

Dimensions

Target Height = 0 Meters
 Target Length: 0 Meters
 Target Shadow: 0 Meters
 Target Width: 0 Meters
 Mag Anomaly:
 Avoidance Area:
 Classification 1: Concrete Pipe
 Classification 2:
 Area: Asphalt Reef
 Block:
 Description:

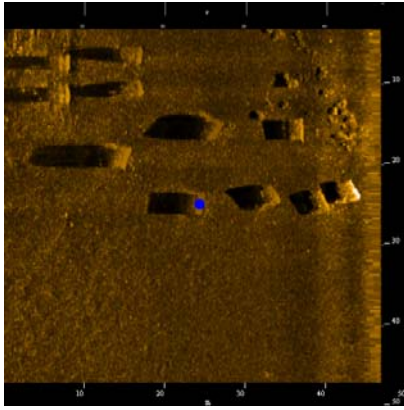


Asphalt0030

- Sonar Time at Target: 09/14/2009 15:34:15
- Click Position (Lat/Lon Coordinates)
37° 44.68945' N 076° 13.35778' W (WGS84)
37° 44.68160' N 076° 13.37790' W (NAD27)
- Click Position (Projected Coordinates)
(X) 392,283.43 (Y) 4,178,206.94
- Map Proj: WGS 1984 UTM, Zone 18 North, Meter
- Acoustic Source File:
I:\Virginia_MS_HD\20090914asphaltpilereef\FILE0001.sds
- Ping Number: 21243
- Range to Target: 10.39 Meters
- Fish Height: 5.42 Meters
- Heading: 0.00000000
- Event Number: 0
- Line Name: FILE0001

Dimensions

Target Height = 0 Meters
 Target Length: 0 Meters
 Target Shadow: 0 Meters
 Target Width: 0 Meters
 Mag Anomaly:
 Avoidance Area:
 Classification 1: Concrete Pipe
 Classification 2:
 Area: Asphalt Reef
 Block:
 Description:

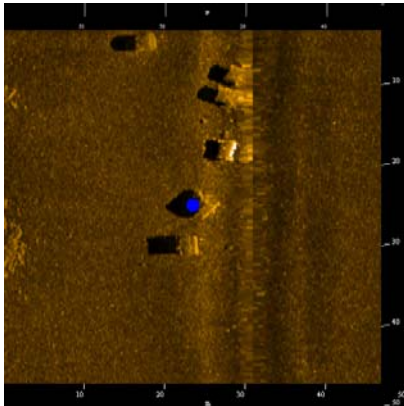


Asphalt0031

- Sonar Time at Target: 09/14/2009 15:34:12
- Click Position (Lat/Lon Coordinates)
37° 44.68466' N 076° 13.36543' W (WGS84)
37° 44.67681' N 076° 13.38556' W (NAD27)
- Click Position (Projected Coordinates)
(X) 392,272.06 (Y) 4,178,198.23
- Map Proj: WGS 1984 UTM, Zone 18 North, Meter
- Acoustic Source File:
I:\Virginia_MS_HD\20090914asphaltpilereef\FILE0001.sds
- Ping Number: 21204
- Range to Target: 21.65 Meters
- Fish Height: 5.48 Meters
- Heading: 0.00000000
- Event Number: 0
- Line Name: FILE0001

Dimensions

Target Height = 0 Meters
Target Length: 0 Meters
Target Shadow: 0 Meters
Target Width: 0 Meters
Mag Anomaly:
Avoidance Area:
Classification 1: Concrete Pipe
Classification 2:
Area: Asphalt Reef
Block:
Description:

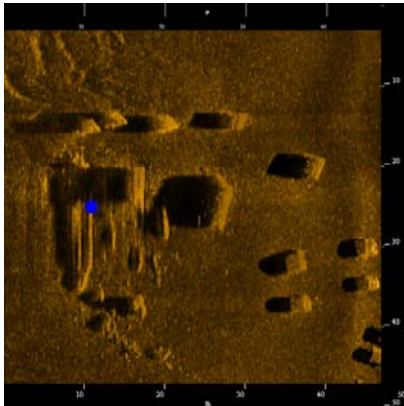


Asphalt0032

- Sonar Time at Target: 09/14/2009 15:26:22
- Click Position (Lat/Lon Coordinates)
37° 44.69511' N 076° 13.38150' W (WGS84)
37° 44.68726' N 076° 13.40163' W (NAD27)
- Click Position (Projected Coordinates)
(X) 392,248.72 (Y) 4,178,217.86
- Map Proj: WGS 1984 UTM, Zone 18 North, Meter
- Acoustic Source File:
I:\Virginia_MS_HD\20090914asphaltpilereef\FILE0001.sds
- Ping Number: 15040
- Range to Target: 5.94 Meters
- Fish Height: 4.46 Meters
- Heading: 0.00000000
- Event Number: 0
- Line Name: FILE0001

Dimensions

Target Height = 0 Meters
Target Length: 0 Meters
Target Shadow: 0 Meters
Target Width: 0 Meters
Mag Anomaly:
Avoidance Area:
Classification 1: Concrete Pipe
Classification 2:
Area: Asphalt Reef
Block:
Description:

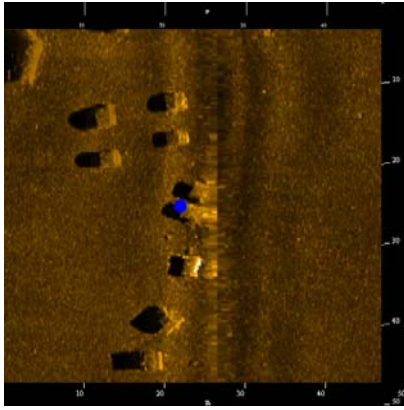


Asphalt0033

- Sonar Time at Target: 09/14/2009 15:26:31
- Click Position (Lat/Lon Coordinates)
37° 44.67766' N 076° 13.35953' W (WGS84)
37° 44.66981' N 076° 13.37966' W (NAD27)
- Click Position (Projected Coordinates)
(X) 392,280.56 (Y) 4,178,185.18
- Map Proj: WGS 1984 UTM, Zone 18 North, Meter
- Acoustic Source File:
I:\Virginia_MS_HD\20090914asphaltpilereef\FILE0001.sds
- Ping Number: 15155
- Range to Target: 38.93 Meters
- Fish Height: 4.25 Meters
- Heading: 0.00000000
- Event Number: 0
- Line Name: FILE0001

Dimensions

Target Height = 0 Meters
Target Length: 0 Meters
Target Shadow: 0 Meters
Target Width: 0 Meters
Mag Anomaly:
Avoidance Area:
Classification 1: Concrete Pipe
Classification 2:
Area: Asphalt Reef
Block:
Description:

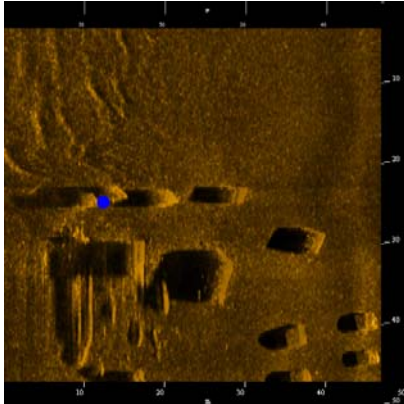


Asphalt0034

- Sonar Time at Target: 09/14/2009 15:26:26
- Click Position (Lat/Lon Coordinates)
37° 44.68740' N 076° 13.38483' W (WGS84)
37° 44.67955' N 076° 13.40496' W (NAD27)
- Click Position (Projected Coordinates)
(X) 392,243.65 (Y) 4,178,203.68
- Map Proj: WGS 1984 UTM, Zone 18 North, Meter
- Acoustic Source File:
I:\Virginia_MS_HD\20090914asphaltpilereef\FILE0001.sds
- Ping Number: 15091
- Range to Target: 1.56 Meters
- Fish Height: 4.33 Meters
- Heading: 0.00000000
- Event Number: 0
- Line Name: FILE0001

Dimensions

Target Height = 0 Meters
Target Length: 0 Meters
Target Shadow: 0 Meters
Target Width: 0 Meters
Mag Anomaly:
Avoidance Area:
Classification 1: Concrete Pipe
Classification 2:
Area: Asphalt Reef
Block:
Description:

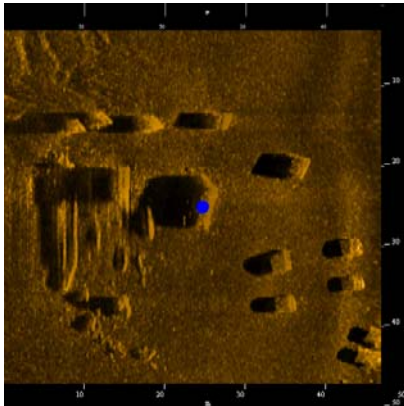


Asphalt0035

- Sonar Time at Target: 09/14/2009 15:26:34
- Click Position (Lat/Lon Coordinates)
37° 44.67253' N 076° 13.36051' W (WGS84)
37° 44.66468' N 076° 13.38063' W (NAD27)
- Click Position (Projected Coordinates)
(X) 392,279.01 (Y) 4,178,175.70
- Map Proj: WGS 1984 UTM, Zone 18 North, Meter
- Acoustic Source File:
I:\Virginia_MS_HD\20090914asphaltpilereef\FILE0001.sds
- Ping Number: 15190
- Range to Target: 37.47 Meters
- Fish Height: 4.31 Meters
- Heading: 0.00000000
- Event Number: 0
- Line Name: FILE0001

Dimensions

Target Height = 0 Meters
Target Length: 0 Meters
Target Shadow: 0 Meters
Target Width: 0 Meters
Mag Anomaly:
Avoidance Area:
Classification 1: Concrete Pipe
Classification 2:
Area: Asphalt Reef
Block:
Description:

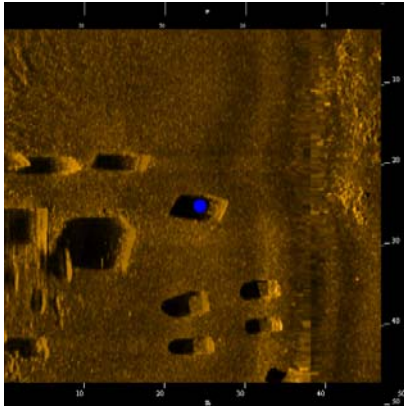


Asphalt0036

- Sonar Time at Target: 09/14/2009 15:26:31
- Click Position (Lat/Lon Coordinates)
37° 44.67767' N 076° 13.37027' W (WGS84)
37° 44.66982' N 076° 13.39039' W (NAD27)
- Click Position (Projected Coordinates)
(X) 392,264.80 (Y) 4,178,185.40
- Map Proj: WGS 1984 UTM, Zone 18 North, Meter
- Acoustic Source File:
I:\Virginia_MS_HD\20090914asphaltpilereef\FILE0001.sds
- Ping Number: 15155
- Range to Target: 23.17 Meters
- Fish Height: 4.25 Meters
- Heading: 0.00000000
- Event Number: 0
- Line Name: FILE0001

Dimensions

Target Height = 0 Meters
Target Length: 0 Meters
Target Shadow: 0 Meters
Target Width: 0 Meters
Mag Anomaly:
Avoidance Area:
Classification 1: Concrete Pipe
Classification 2:
Area: Asphalt Reef
Block:
Description:

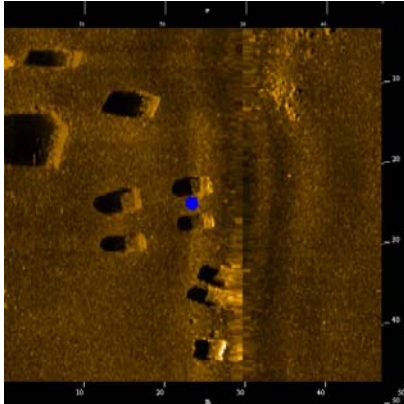


Asphalt0037

- Sonar Time at Target: 09/14/2009 15:26:33
- Click Position (Lat/Lon Coordinates)
37° 44.67483' N 076° 13.37716' W (WGS84)
37° 44.66698' N 076° 13.39728' W (NAD27)
- Click Position (Projected Coordinates)
(X) 392,254.61 (Y) 4,178,180.28
- Map Proj: WGS 1984 UTM, Zone 18 North, Meter
- Acoustic Source File:
I:\Virginia_MS_HD\20090914asphaltpilereef\FILE0001.sds
- Ping Number: 15174
- Range to Target: 13.04 Meters
- Fish Height: 4.28 Meters
- Heading: 0.00000000
- Event Number: 0
- Line Name: FILE0001

Dimensions

Target Height = 0 Meters
Target Length: 0 Meters
Target Shadow: 0 Meters
Target Width: 0 Meters
Mag Anomaly:
Avoidance Area:
Classification 1: Concrete Pipe
Classification 2:
Area: Asphalt Reef
Block:
Description:

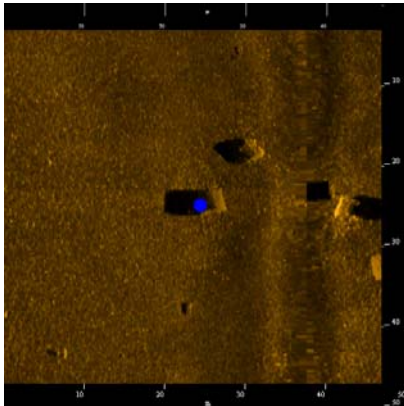


Asphalt0038

- Sonar Time at Target: 09/14/2009 15:26:29
- Click Position (Lat/Lon Coordinates)
37° 44.68161' N 076° 13.38283' W (WGS84)
37° 44.67376' N 076° 13.40296' W (NAD27)
- Click Position (Projected Coordinates)
(X) 392,246.44 (Y) 4,178,192.92
- Map Proj: WGS 1984 UTM, Zone 18 North, Meter
- Acoustic Source File:
I:\Virginia_MS_HD\20090914asphaltpilereef\FILE0001.sds
- Ping Number: 15129
- Range to Target: 4.67 Meters
- Fish Height: 4.21 Meters
- Heading: 0.00000000
- Event Number: 0
- Line Name: FILE0001

Dimensions

Target Height = 0 Meters
Target Length: 0 Meters
Target Shadow: 0 Meters
Target Width: 0 Meters
Mag Anomaly:
Avoidance Area:
Classification 1: Concrete Pipe
Classification 2:
Area: Asphalt Reef
Block:
Description:

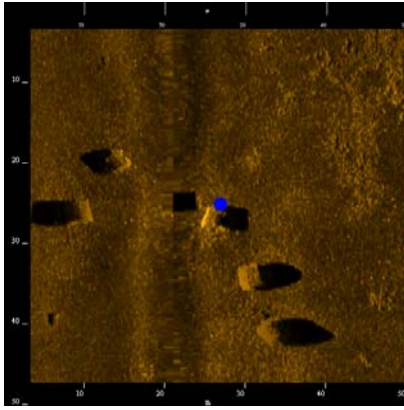


Asphalt0039

- Sonar Time at Target: 09/14/2009 15:26:06
- Click Position (Lat/Lon Coordinates)
37° 44.72570' N 076° 13.37497' W (WGS84)
37° 44.71785' N 076° 13.39510' W (NAD27)
- Click Position (Projected Coordinates)
(X) 392,259.05 (Y) 4,178,274.30
- Map Proj: WGS 1984 UTM, Zone 18 North, Meter
- Acoustic Source File:
I:\Virginia_MS_HD\20090914asphaltpilereef\FILE0001.sds
- Ping Number: 14842
- Range to Target: 12.56 Meters
- Fish Height: 4.10 Meters
- Heading: 0.00000000
- Event Number: 0
- Line Name: FILE0001

Dimensions

Target Height = 0 Meters
Target Length: 0 Meters
Target Shadow: 0 Meters
Target Width: 0 Meters
Mag Anomaly:
Avoidance Area:
Classification 1: Concrete Pipe
Classification 2:
Area: Asphalt Reef
Block:
Description:

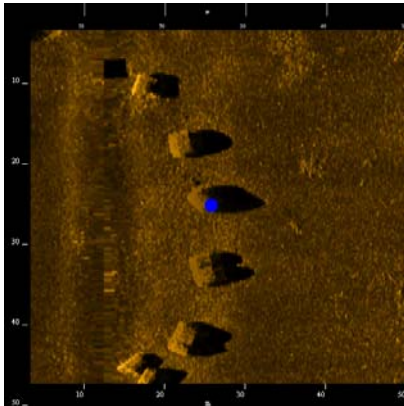


Asphalt0040

- Sonar Time at Target: 09/14/2009 15:26:07
- Click Position (Lat/Lon Coordinates)
37° 44.72530' N 076° 13.38634' W (WGS84)
37° 44.71745' N 076° 13.40647' W (NAD27)
- Click Position (Projected Coordinates)
(X) 392,242.34 (Y) 4,178,273.78
- Map Proj: WGS 1984 UTM, Zone 18 North, Meter
- Acoustic Source File:
I:\Virginia_MS_HD\20090914asphaltpilereef\FILE0001.sds
- Ping Number: 14847
- Range to Target: 4.09 Meters
- Fish Height: 4.11 Meters
- Heading: 0.00000000
- Event Number: 0
- Line Name: FILE0001

Dimensions

Target Height = 0 Meters
 Target Length: 0 Meters
 Target Shadow: 0 Meters
 Target Width: 0 Meters
 Mag Anomaly:
 Avoidance Area:
 Classification 1: Concrete Pipe
 Classification 2:
 Area: Asphalt Reef
 Block:
 Description:

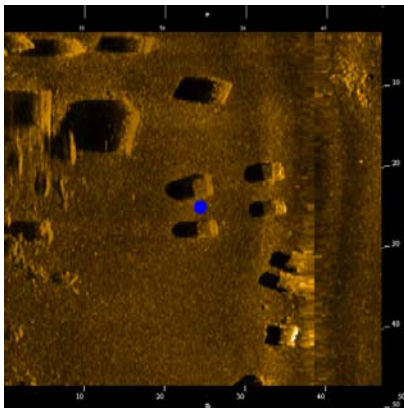


Asphalt0041

- Sonar Time at Target: 09/14/2009 15:26:02
- Click Position (Lat/Lon Coordinates)
37° 44.73441' N 076° 13.39180' W (WGS84)
37° 44.72656' N 076° 13.41192' W (NAD27)
- Click Position (Projected Coordinates)
(X) 392,234.56 (Y) 4,178,290.74
- Map Proj: WGS 1984 UTM, Zone 18 North, Meter
- Acoustic Source File:
I:\Virginia_MS_HD\20090914asphaltpilereef\FILE0001.sds
- Ping Number: 14789
- Range to Target: 12.66 Meters
- Fish Height: 4.03 Meters
- Heading: 0.00000000
- Event Number: 0
- Line Name: FILE0001

Dimensions

Target Height = 0 Meters
 Target Length: 0 Meters
 Target Shadow: 0 Meters
 Target Width: 0 Meters
 Mag Anomaly:
 Avoidance Area:
 Classification 1: Concrete Pipe
 Classification 2:
 Area: Asphalt Reef
 Block:
 Description:

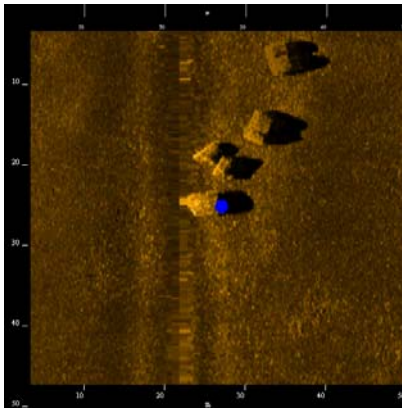


Asphalt0042

- Sonar Time at Target: 09/14/2009 15:26:29
- Click Position (Lat/Lon Coordinates)
37° 44.68276' N 076° 13.37679' W (WGS84)
37° 44.67491' N 076° 13.39691' W (NAD27)
- Click Position (Projected Coordinates)
(X) 392,255.35 (Y) 4,178,194.93
- Map Proj: WGS 1984 UTM, Zone 18 North, Meter
- Acoustic Source File:
I:\Virginia_MS_HD\20090914asphaltpilereef\FILE0001.sds
- Ping Number: 15121
- Range to Target: 13.53 Meters
- Fish Height: 4.20 Meters
- Heading: 0.00000000
- Event Number: 0
- Line Name: FILE0001

Dimensions

Target Height = 0 Meters
 Target Length: 0 Meters
 Target Shadow: 0 Meters
 Target Width: 0 Meters
 Mag Anomaly:
 Avoidance Area:
 Classification 1: Concrete Pipe
 Classification 2:
 Area: Asphalt Reef
 Block:
 Description:

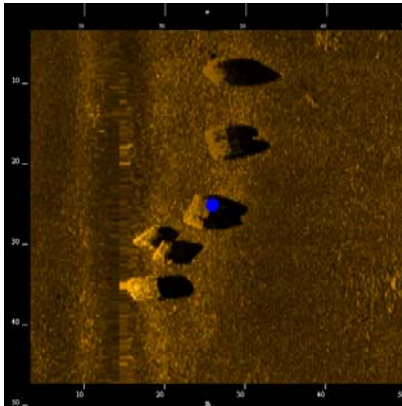


Asphalt0043

- Sonar Time at Target: 09/14/2009 15:25:55
- Click Position (Lat/Lon Coordinates)
37° 44.74862' N 076° 13.38537' W (WGS84)
37° 44.74077' N 076° 13.40550' W (NAD27)
- Click Position (Projected Coordinates)
(X) 392,244.33 (Y) 4,178,316.88
- Map Proj: WGS 1984 UTM, Zone 18 North, Meter
- Acoustic Source File:
I:\Virginia_MS_HD\20090914asphaltpilereef\FILE0001.sds
- Ping Number: 14697
- Range to Target: 3.31 Meters
- Fish Height: 4.01 Meters
- Heading: 0.00000000
- Event Number: 0
- Line Name: FILE0001

Dimensions

Target Height = 0 Meters
 Target Length: 0 Meters
 Target Shadow: 0 Meters
 Target Width: 0 Meters
 Mag Anomaly:
 Avoidance Area:
 Classification 1: Concrete Pipe
 Classification 2:
 Area: Asphalt Reef
 Block:
 Description:

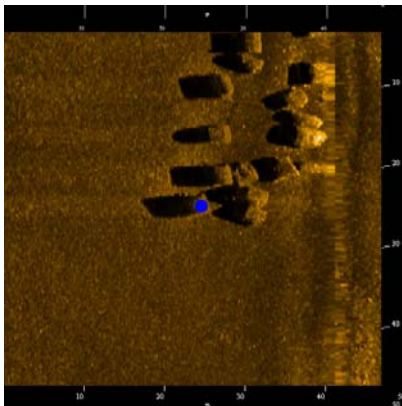


Asphalt0044

- Sonar Time at Target: 09/14/2009 15:25:58
- Click Position (Lat/Lon Coordinates)
37° 44.74286' N 076° 13.39036' W (WGS84)
37° 44.73501' N 076° 13.41049' W (NAD27)
- Click Position (Projected Coordinates)
(X) 392,236.87 (Y) 4,178,306.33
- Map Proj: WGS 1984 UTM, Zone 18 North, Meter
- Acoustic Source File:
I:\Virginia_MS_HD\20090914asphaltpilereef\FILE0001.sds
- Ping Number: 14734
- Range to Target: 10.71 Meters
- Fish Height: 4.01 Meters
- Heading: 0.00000000
- Event Number: 0
- Line Name: FILE0001

Dimensions

Target Height = 0 Meters
 Target Length: 0 Meters
 Target Shadow: 0 Meters
 Target Width: 0 Meters
 Mag Anomaly:
 Avoidance Area:
 Classification 1: Concrete Pipe
 Classification 2:
 Area: Asphalt Reef
 Block:
 Description:

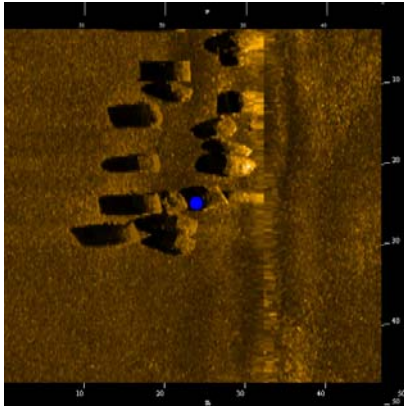


Asphalt0045

- Sonar Time at Target: 09/14/2009 15:25:30
- Click Position (Lat/Lon Coordinates)
37° 44.79981' N 076° 13.37445' W (WGS84)
37° 44.79196' N 076° 13.39457' W (NAD27)
- Click Position (Projected Coordinates)
(X) 392,261.62 (Y) 4,178,411.34
- Map Proj: WGS 1984 UTM, Zone 18 North, Meter
- Acoustic Source File:
I:\Virginia_MS_HD\20090914asphaltpilereef\FILE0001.sds
- Ping Number: 14368
- Range to Target: 16.06 Meters
- Fish Height: 4.10 Meters
- Heading: 0.00000000
- Event Number: 0
- Line Name: FILE0001

Dimensions

Target Height = 0 Meters
 Target Length: 0 Meters
 Target Shadow: 0 Meters
 Target Width: 0 Meters
 Mag Anomaly:
 Avoidance Area:
 Classification 1: Concrete Pipe
 Classification 2:
 Area: Asphalt Reef
 Block:
 Description:

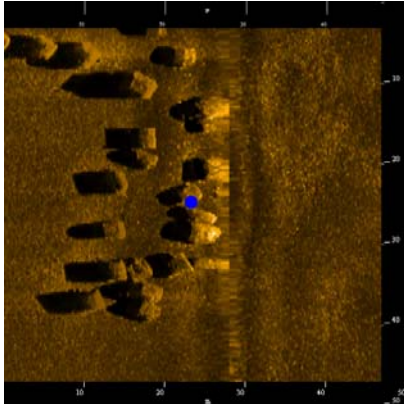


Asphalt0046

- Sonar Time at Target: 09/14/2009 15:25:31
- Click Position (Lat/Lon Coordinates)
37° 44.79749' N 076° 13.38031' W (WGS84)
37° 44.78964' N 076° 13.40043' W (NAD27)
- Click Position (Projected Coordinates)
(X) 392,252.95 (Y) 4,178,407.17
- Map Proj: WGS 1984 UTM, Zone 18 North, Meter
- Acoustic Source File:
I:\Virginia_MS_HD\20090914asphaltpilereef\FILE0001.sds
- Ping Number: 14382
- Range to Target: 7.30 Meters
- Fish Height: 4.10 Meters
- Heading: 0.00000000
- Event Number: 0
- Line Name: FILE0001

Dimensions

Target Height = 0 Meters
Target Length: 0 Meters
Target Shadow: 0 Meters
Target Width: 0 Meters
Mag Anomaly:
Avoidance Area:
Classification 1: Concrete Pipe
Classification 2:
Area: Asphalt Reef
Block:
Description:

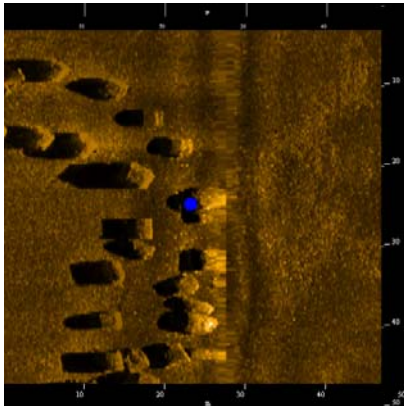


Asphalt0047

- Sonar Time at Target: 09/14/2009 15:25:33
- Click Position (Lat/Lon Coordinates)
37° 44.79282' N 076° 13.38300' W (WGS84)
37° 44.78497' N 076° 13.40312' W (NAD27)
- Click Position (Projected Coordinates)
(X) 392,248.88 (Y) 4,178,398.58
- Map Proj: WGS 1984 UTM, Zone 18 North, Meter
- Acoustic Source File:
I:\Virginia_MS_HD\20090914asphaltpilereef\FILE0001.sds
- Ping Number: 14412
- Range to Target: 3.02 Meters
- Fish Height: 3.61 Meters
- Heading: 0.00000000
- Event Number: 0
- Line Name: FILE0001

Dimensions

Target Height = 0 Meters
Target Length: 0 Meters
Target Shadow: 0 Meters
Target Width: 0 Meters
Mag Anomaly:
Avoidance Area:
Classification 1: Concrete Pipe
Classification 2:
Area: Asphalt Reef
Block:
Description:

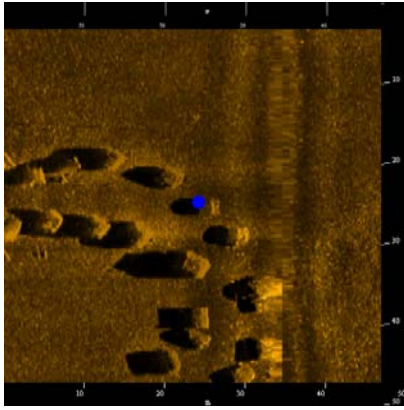


Asphalt0048

- Sonar Time at Target: 09/14/2009 15:25:36
- Click Position (Lat/Lon Coordinates)
37° 44.78684' N 076° 13.38297' W (WGS84)
37° 44.77899' N 076° 13.40310' W (NAD27)
- Click Position (Projected Coordinates)
(X) 392,248.78 (Y) 4,178,387.52
- Map Proj: WGS 1984 UTM, Zone 18 North, Meter
- Acoustic Source File:
I:\Virginia_MS_HD\20090914asphaltpilereef\FILE0001.sds
- Ping Number: 14451
- Range to Target: 2.63 Meters
- Fish Height: 3.56 Meters
- Heading: 0.00000000
- Event Number: 0
- Line Name: FILE0001

Dimensions

Target Height = 0 Meters
Target Length: 0 Meters
Target Shadow: 0 Meters
Target Width: 0 Meters
Mag Anomaly:
Avoidance Area:
Classification 1: Concrete Pipe
Classification 2:
Area: Asphalt Reef
Block:
Description:

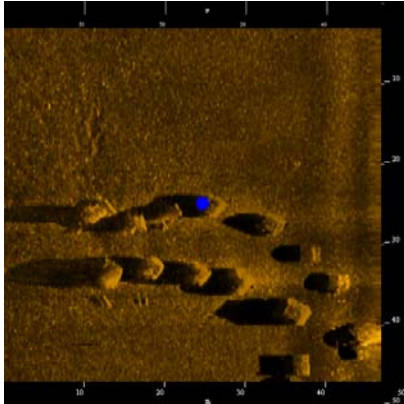


Asphalt0049

- Sonar Time at Target: 09/14/2009 15:25:39
- Click Position (Lat/Lon Coordinates)
37° 44.78085' N 076° 13.37795' W (WGS84)
37° 44.77300' N 076° 13.39808' W (NAD27)
- Click Position (Projected Coordinates)
(X) 392,256.00 (Y) 4,178,376.35
- Map Proj: WGS 1984 UTM, Zone 18 North, Meter
- Acoustic Source File:
I:\Virginia_MS_HD\20090914asphaltpilereef\FILE0001.sds
- Ping Number: 14491
- Range to Target: 9.54 Meters
- Fish Height: 4.01 Meters
- Heading: 0.00000000
- Event Number: 0
- Line Name: FILE0001

Dimensions

Target Height = 0 Meters
Target Length: 0 Meters
Target Shadow: 0 Meters
Target Width: 0 Meters
Mag Anomaly:
Avoidance Area:
Classification 1: Concrete Pipe
Classification 2:
Area: Asphalt Reef
Block:
Description:

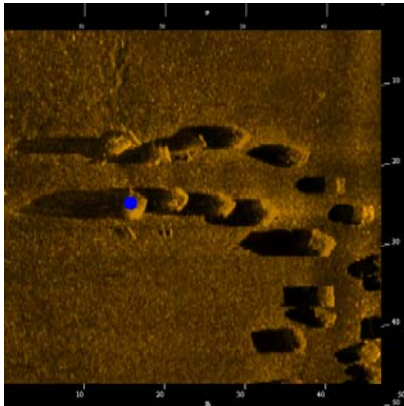


Asphalt0050

- Sonar Time at Target: 09/14/2009 15:25:41
- Click Position (Lat/Lon Coordinates)
37° 44.77805' N 076° 13.36931' W (WGS84)
37° 44.77020' N 076° 13.38944' W (NAD27)
- Click Position (Projected Coordinates)
(X) 392,268.63 (Y) 4,178,371.00
- Map Proj: WGS 1984 UTM, Zone 18 North, Meter
- Acoustic Source File:
I:\Virginia_MS_HD\20090914asphaltpilereef\FILE0001.sds
- Ping Number: 14511
- Range to Target: 22.01 Meters
- Fish Height: 4.01 Meters
- Heading: 0.00000000
- Event Number: 0
- Line Name: FILE0001

Dimensions

Target Height = 0 Meters
Target Length: 0 Meters
Target Shadow: 0 Meters
Target Width: 0 Meters
Mag Anomaly:
Avoidance Area:
Classification 1: Concrete Pipe
Classification 2:
Area: Asphalt Reef
Block:
Description:

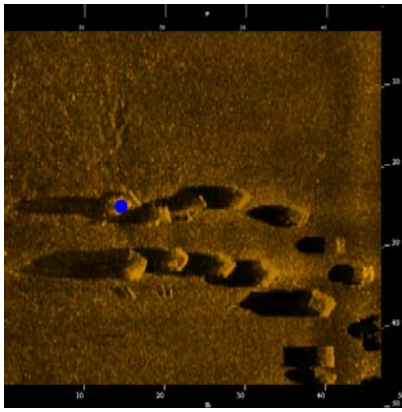


Asphalt0051

- Sonar Time at Target: 09/14/2009 15:25:39
- Click Position (Lat/Lon Coordinates)
37° 44.78293' N 076° 13.36134' W (WGS84)
37° 44.77508' N 076° 13.38146' W (NAD27)
- Click Position (Projected Coordinates)
(X) 392,280.45 (Y) 4,178,379.88
- Map Proj: WGS 1984 UTM, Zone 18 North, Meter
- Acoustic Source File:
I:\Virginia_MS_HD\20090914asphaltpilereef\FILE0001.sds
- Ping Number: 14481
- Range to Target: 34.08 Meters
- Fish Height: 4.01 Meters
- Heading: 0.00000000
- Event Number: 0
- Line Name: FILE0001

Dimensions

Target Height = 0 Meters
Target Length: 0 Meters
Target Shadow: 0 Meters
Target Width: 0 Meters
Mag Anomaly:
Avoidance Area:
Classification 1: Concrete Pipe
Classification 2:
Area: Asphalt Reef
Block:
Description:

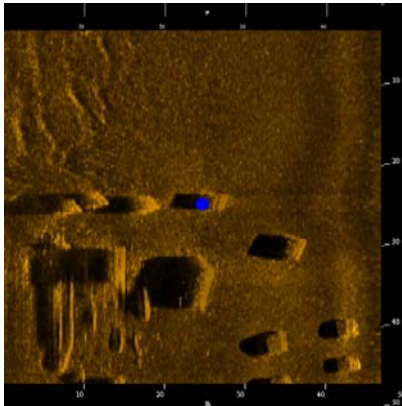


Asphalt0052

- Sonar Time at Target: 09/14/2009 15:25:40
- Click Position (Lat/Lon Coordinates)
37° 44.77912' N 076° 13.36034' W (WGS84)
37° 44.77127' N 076° 13.38047' W (NAD27)
- Click Position (Projected Coordinates)
(X) 392,281.82 (Y) 4,178,372.81
- Map Proj: WGS 1984 UTM, Zone 18 North, Meter
- Acoustic Source File:
I:\Virginia_MS_HD\20090914asphaltpilereef\FILE0001.sds
- Ping Number: 14506
- Range to Target: 35.25 Meters
- Fish Height: 4.01 Meters
- Heading: 0.00000000
- Event Number: 0
- Line Name: FILE0001

Dimensions

Target Height = 0 Meters
Target Length: 0 Meters
Target Shadow: 0 Meters
Target Width: 0 Meters
Mag Anomaly:
Avoidance Area:
Classification 1: Concrete Pipe
Classification 2:
Area: Asphalt Reef
Block:
Description:

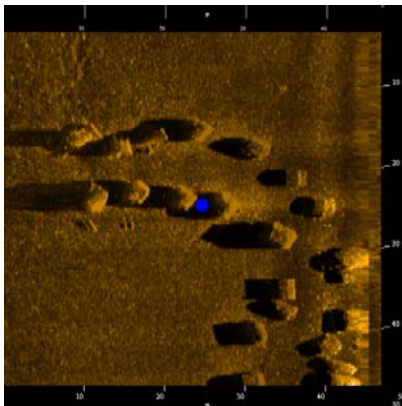


Asphalt0053

- Sonar Time at Target: 09/14/2009 15:26:34
- Click Position (Lat/Lon Coordinates)
37° 44.67217' N 076° 13.37058' W (WGS84)
37° 44.66432' N 076° 13.39070' W (NAD27)
- Click Position (Projected Coordinates)
(X) 392,264.21 (Y) 4,178,175.24
- Map Proj: WGS 1984 UTM, Zone 18 North, Meter
- Acoustic Source File:
I:\Virginia_MS_HD\20090914asphaltpilereef\FILE0001.sds
- Ping Number: 15192
- Range to Target: 22.68 Meters
- Fish Height: 4.31 Meters
- Heading: 0.00000000
- Event Number: 0
- Line Name: FILE0001

Dimensions

Target Height = 0 Meters
Target Length: 0 Meters
Target Shadow: 0 Meters
Target Width: 0 Meters
Mag Anomaly:
Avoidance Area:
Classification 1: Concrete Pipe
Classification 2:
Area: Asphalt Reef
Block:
Description:

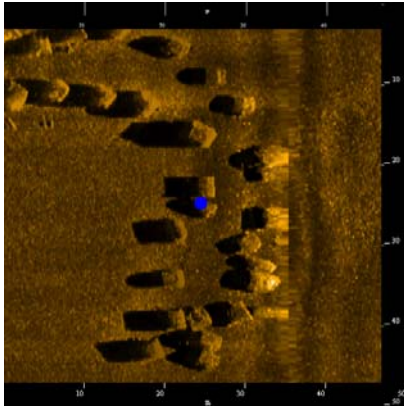


Asphalt0054

- Sonar Time at Target: 09/14/2009 15:25:38
- Click Position (Lat/Lon Coordinates)
37° 44.78324' N 076° 13.37078' W (WGS84)
37° 44.77539' N 076° 13.39090' W (NAD27)
- Click Position (Projected Coordinates)
(X) 392,266.60 (Y) 4,178,380.63
- Map Proj: WGS 1984 UTM, Zone 18 North, Meter
- Acoustic Source File:
I:\Virginia_MS_HD\20090914asphaltpilereef\FILE0001.sds
- Ping Number: 14477
- Range to Target: 20.25 Meters
- Fish Height: 4.01 Meters
- Heading: 0.00000000
- Event Number: 0
- Line Name: FILE0001

Dimensions

Target Height = 0 Meters
Target Length: 0 Meters
Target Shadow: 0 Meters
Target Width: 0 Meters
Mag Anomaly:
Avoidance Area:
Classification 1: Concrete Pipe
Classification 2:
Area: Asphalt Reef
Block:
Description:

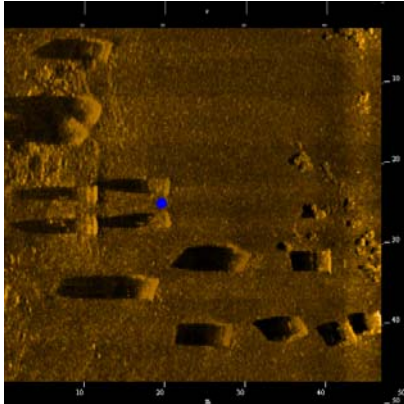


Asphalt0055

- Sonar Time at Target: 09/14/2009 15:25:35
- Click Position (Lat/Lon Coordinates)
37° 44.78976' N 076° 13.37787' W (WGS84)
37° 44.78191' N 076° 13.39799' W (NAD27)
- Click Position (Projected Coordinates)
(X) 392,256.35 (Y) 4,178,392.83
- Map Proj: WGS 1984 UTM, Zone 18 North, Meter
- Acoustic Source File:
I:\Virginia_MS_HD\20090914asphaltpilereef\FILE0001.sds
- Ping Number: 14433
- Range to Target: 10.33 Meters
- Fish Height: 3.42 Meters
- Heading: 0.00000000
- Event Number: 0
- Line Name: FILE0001

Dimensions

Target Height = 0 Meters
Target Length: 0 Meters
Target Shadow: 0 Meters
Target Width: 0 Meters
Mag Anomaly:
Avoidance Area:
Classification 1: Concrete Pipe
Classification 2:
Area: Asphalt Reef
Block:
Description:

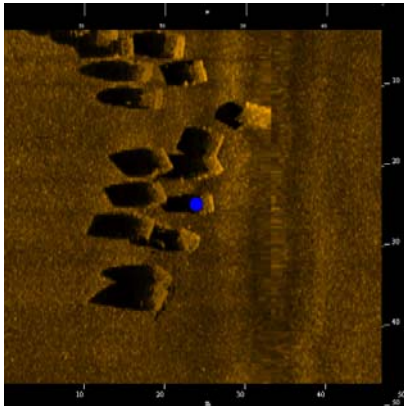


Asphalt0056

- Sonar Time at Target: 09/14/2009 15:34:18
- Click Position (Lat/Lon Coordinates)
37° 44.69360' N 076° 13.37114' W (WGS84)
37° 44.68575' N 076° 13.39127' W (NAD27)
- Click Position (Projected Coordinates)
(X) 392,263.90 (Y) 4,178,214.88
- Map Proj: WGS 1984 UTM, Zone 18 North, Meter
- Acoustic Source File:
I:\Virginia_MS_HD\20090914asphaltpilereef\FILE0001.sds
- Ping Number: 21277
- Range to Target: 30.01 Meters
- Fish Height: 5.35 Meters
- Heading: 0.00000000
- Event Number: 0
- Line Name: FILE0001

Dimensions

Target Height = 0 Meters
Target Length: 0 Meters
Target Shadow: 0 Meters
Target Width: 0 Meters
Mag Anomaly:
Avoidance Area:
Classification 1: Concrete Pipe
Classification 2:
Area: Asphalt Reef
Block:
Description:

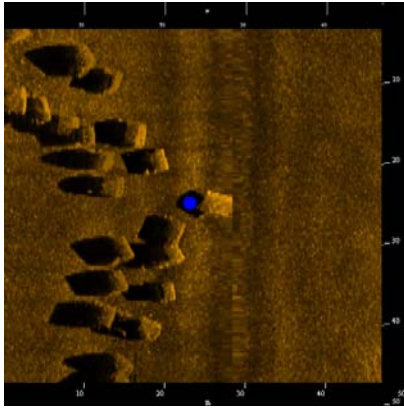


Asphalt0057

- Sonar Time at Target: 09/14/2009 15:25:07
- Click Position (Lat/Lon Coordinates)
37° 44.84604' N 076° 13.38209' W (WGS84)
37° 44.83820' N 076° 13.40221' W (NAD27)
- Click Position (Projected Coordinates)
(X) 392,251.51 (Y) 4,178,496.99
- Map Proj: WGS 1984 UTM, Zone 18 North, Meter
- Acoustic Source File:
I:\Virginia_MS_HD\20090914asphaltpilereef\FILE0001.sds
- Ping Number: 14066
- Range to Target: 8.17 Meters
- Fish Height: 4.37 Meters
- Heading: 0.00000000
- Event Number: 0
- Line Name: FILE0001

Dimensions

Target Height = 0 Meters
Target Length: 0 Meters
Target Shadow: 0 Meters
Target Width: 0 Meters
Mag Anomaly:
Avoidance Area:
Classification 1: Concrete Pipe
Classification 2:
Area: Asphalt Reef
Block:
Description:

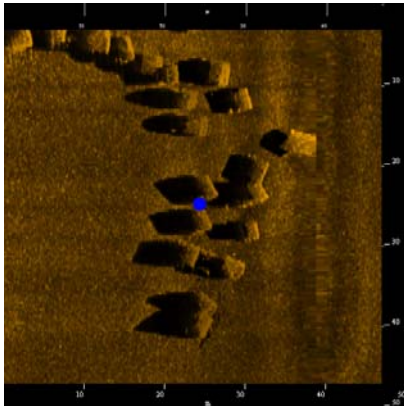


Asphalt0058

- Sonar Time at Target: 09/14/2009 15:25:10
- Click Position (Lat/Lon Coordinates)
37° 44.83991' N 076° 13.38505' W (WGS84)
37° 44.83206' N 076° 13.40517' W (NAD27)
- Click Position (Projected Coordinates)
(X) 392,247.02 (Y) 4,178,485.70
- Map Proj: WGS 1984 UTM, Zone 18 North, Meter
- Acoustic Source File:
I:\Virginia_MS_HD\20090914asphaltpilereef\FILE0001.sds
- Ping Number: 14105
- Range to Target: 3.41 Meters
- Fish Height: 3.99 Meters
- Heading: 0.00000000
- Event Number: 0
- Line Name: FILE0001

Dimensions

Target Height = 0 Meters
 Target Length: 0 Meters
 Target Shadow: 0 Meters
 Target Width: 0 Meters
 Mag Anomaly:
 Avoidance Area:
 Classification 1: Concrete Pipe
 Classification 2:
 Area: Asphalt Reef
 Block:
 Description:

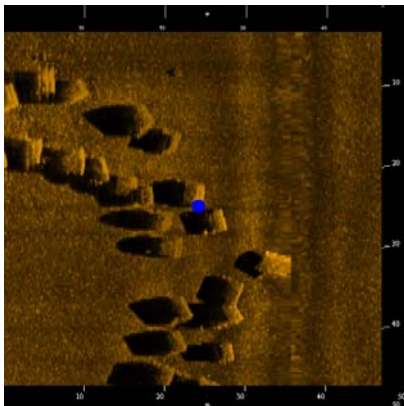


Asphalt0059

- Sonar Time at Target: 09/14/2009 15:25:07
- Click Position (Lat/Lon Coordinates)
37° 44.84430' N 076° 13.37823' W (WGS84)
37° 44.83645' N 076° 13.39835' W (NAD27)
- Click Position (Projected Coordinates)
(X) 392,257.13 (Y) 4,178,493.69
- Map Proj: WGS 1984 UTM, Zone 18 North, Meter
- Acoustic Source File:
I:\Virginia_MS_HD\20090914asphaltpilereef\FILE0001.sds
- Ping Number: 14078
- Range to Target: 13.72 Meters
- Fish Height: 4.33 Meters
- Heading: 0.00000000
- Event Number: 0
- Line Name: FILE0001

Dimensions

Target Height = 0 Meters
 Target Length: 0 Meters
 Target Shadow: 0 Meters
 Target Width: 0 Meters
 Mag Anomaly:
 Avoidance Area:
 Classification 1: Concrete Pipe
 Classification 2:
 Area: Asphalt Reef
 Block:
 Description:

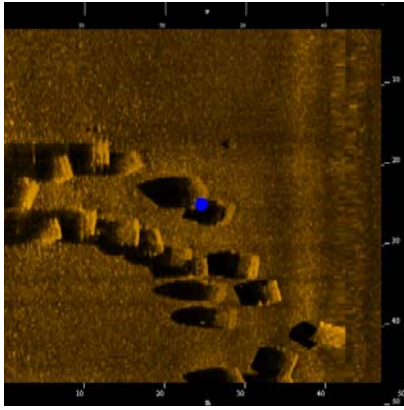


Asphalt0060

- Sonar Time at Target: 09/14/2009 15:25:12
- Click Position (Lat/Lon Coordinates)
37° 44.83620' N 076° 13.37995' W (WGS84)
37° 44.82835' N 076° 13.40007' W (NAD27)
- Click Position (Projected Coordinates)
(X) 392,254.42 (Y) 4,178,478.75
- Map Proj: WGS 1984 UTM, Zone 18 North, Meter
- Acoustic Source File:
I:\Virginia_MS_HD\20090914asphaltpilereef\FILE0001.sds
- Ping Number: 14130
- Range to Target: 10.61 Meters
- Fish Height: 4.18 Meters
- Heading: 0.00000000
- Event Number: 0
- Line Name: FILE0001

Dimensions

Target Height = 0 Meters
 Target Length: 0 Meters
 Target Shadow: 0 Meters
 Target Width: 0 Meters
 Mag Anomaly:
 Avoidance Area:
 Classification 1: Concrete Pipe
 Classification 2:
 Area: Asphalt Reef
 Block:
 Description:

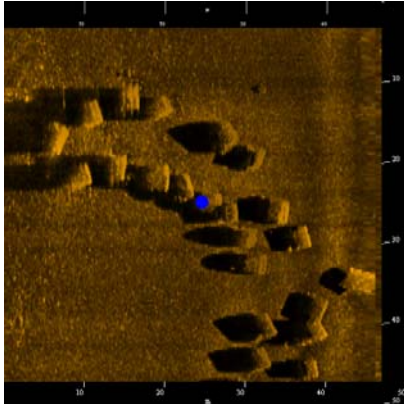


Asphalt0061

- Sonar Time at Target: 09/14/2009 15:25:14
- Click Position (Lat/Lon Coordinates)
37° 44.83141' N 076° 13.37512' W (WGS84)
37° 44.82356' N 076° 13.39524' W (NAD27)
- Click Position (Projected Coordinates)
(X) 392,261.39 (Y) 4,178,469.79
- Map Proj: WGS 1984 UTM, Zone 18 North, Meter
- Acoustic Source File:
I:\Virginia_MS_HD\20090914asphaltpilereef\FILE0001.sds
- Ping Number: 14162
- Range to Target: 17.32 Meters
- Fish Height: 4.30 Meters
- Heading: 0.00000000
- Event Number: 0
- Line Name: FILE0001

Dimensions

Target Height = 0 Meters
Target Length: 0 Meters
Target Shadow: 0 Meters
Target Width: 0 Meters
Mag Anomaly:
Avoidance Area:
Classification 1: Concrete Pipe
Classification 2:
Area: Asphalt Reef
Block:
Description:

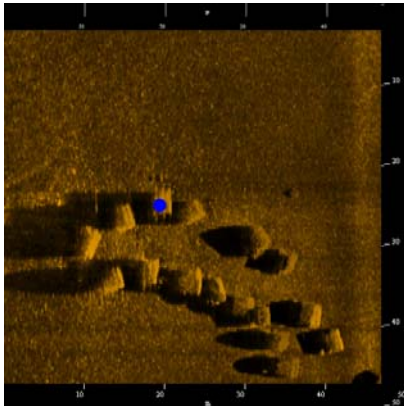


Asphalt0062

- Sonar Time at Target: 09/14/2009 15:25:12
- Click Position (Lat/Lon Coordinates)
37° 44.83505' N 076° 13.37279' W (WGS84)
37° 44.82720' N 076° 13.39291' W (NAD27)
- Click Position (Projected Coordinates)
(X) 392,264.90 (Y) 4,178,476.47
- Map Proj: WGS 1984 UTM, Zone 18 North, Meter
- Acoustic Source File:
I:\Virginia_MS_HD\20090914asphaltpilereef\FILE0001.sds
- Ping Number: 14139
- Range to Target: 21.03 Meters
- Fish Height: 4.21 Meters
- Heading: 0.00000000
- Event Number: 0
- Line Name: FILE0001

Dimensions

Target Height = 0 Meters
Target Length: 0 Meters
Target Shadow: 0 Meters
Target Width: 0 Meters
Mag Anomaly:
Avoidance Area:
Classification 1: Concrete Pipe
Classification 2:
Area: Asphalt Reef
Block:
Description:

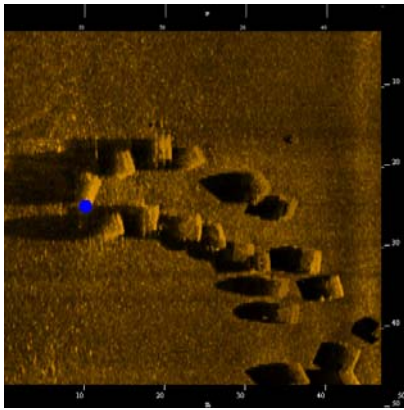


Asphalt0063

- Sonar Time at Target: 09/14/2009 15:25:16
- Click Position (Lat/Lon Coordinates)
37° 44.82845' N 076° 13.36608' W (WGS84)
37° 44.82060' N 076° 13.38620' W (NAD27)
- Click Position (Projected Coordinates)
(X) 392,274.59 (Y) 4,178,464.14
- Map Proj: WGS 1984 UTM, Zone 18 North, Meter
- Acoustic Source File:
I:\Virginia_MS_HD\20090914asphaltpilereef\FILE0001.sds
- Ping Number: 14183
- Range to Target: 30.36 Meters
- Fish Height: 4.38 Meters
- Heading: 0.00000000
- Event Number: 0
- Line Name: FILE0001

Dimensions

Target Height = 0 Meters
Target Length: 0 Meters
Target Shadow: 0 Meters
Target Width: 0 Meters
Mag Anomaly:
Avoidance Area:
Classification 1: Concrete Pipe
Classification 2:
Area: Asphalt Reef
Block:
Description:

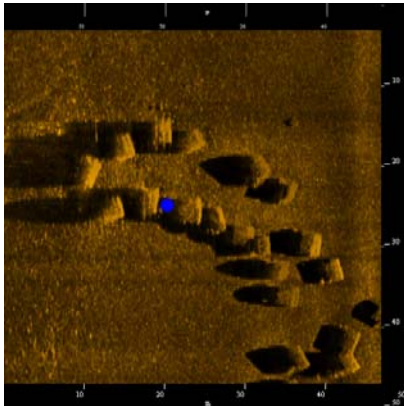


Asphalt0064

- Sonar Time at Target: 09/14/2009 15:25:14
- Click Position (Lat/Lon Coordinates)
37° 44.83238' N 076° 13.35998' W (WGS84)
37° 44.82453' N 076° 13.38010' W (NAD27)
- Click Position (Projected Coordinates)
(X) 392,283.65 (Y) 4,178,471.29
- Map Proj: WGS 1984 UTM, Zone 18 North, Meter
- Acoustic Source File:
I:\Virginia_MS_HD\20090914asphaltpilereef\FILE0001.sds
- Ping Number: 14159
- Range to Target: 39.61 Meters
- Fish Height: 4.29 Meters
- Heading: 0.00000000
- Event Number: 0
- Line Name: FILE0001

Dimensions

Target Height = 0 Meters
Target Length: 0 Meters
Target Shadow: 0 Meters
Target Width: 0 Meters
Mag Anomaly:
Avoidance Area:
Classification 1: Concrete Pipe
Classification 2:
Area: Asphalt Reef
Block:
Description:

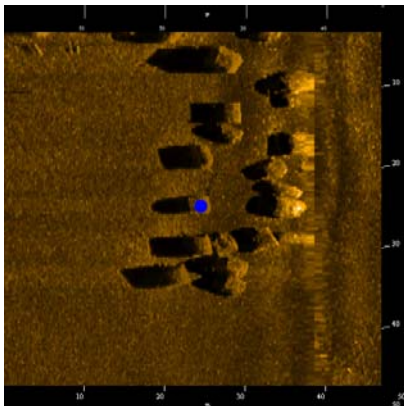


Asphalt0065

- Sonar Time at Target: 09/14/2009 15:25:13
- Click Position (Lat/Lon Coordinates)
37° 44.83323' N 076° 13.36692' W (WGS84)
37° 44.82538' N 076° 13.38704' W (NAD27)
- Click Position (Projected Coordinates)
(X) 392,273.47 (Y) 4,178,473.00
- Map Proj: WGS 1984 UTM, Zone 18 North, Meter
- Acoustic Source File:
I:\Virginia_MS_HD\20090914asphaltpilereef\FILE0001.sds
- Ping Number: 14152
- Range to Target: 29.49 Meters
- Fish Height: 4.26 Meters
- Heading: 0.00000000
- Event Number: 0
- Line Name: FILE0001

Dimensions

Target Height = 0 Meters
Target Length: 0 Meters
Target Shadow: 0 Meters
Target Width: 0 Meters
Mag Anomaly:
Avoidance Area:
Classification 1: Concrete Pipe
Classification 2:
Area: Asphalt Reef
Block:
Description:

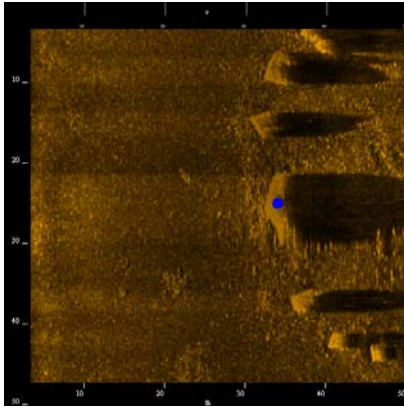


Asphalt0066

- Sonar Time at Target: 09/14/2009 15:25:32
- Click Position (Lat/Lon Coordinates)
37° 44.79502' N 076° 13.37594' W (WGS84)
37° 44.78718' N 076° 13.39606' W (NAD27)
- Click Position (Projected Coordinates)
(X) 392,259.31 (Y) 4,178,402.52
- Map Proj: WGS 1984 UTM, Zone 18 North, Meter
- Acoustic Source File:
I:\Virginia_MS_HD\20090914asphaltpilereef\FILE0001.sds
- Ping Number: 14399
- Range to Target: 13.54 Meters
- Fish Height: 3.87 Meters
- Heading: 0.00000000
- Event Number: 0
- Line Name: FILE0001

Dimensions

Target Height = 0 Meters
Target Length: 0 Meters
Target Shadow: 0 Meters
Target Width: 0 Meters
Mag Anomaly:
Avoidance Area:
Classification 1: Concrete Pipe
Classification 2:
Area: Asphalt Reef
Block:
Description:

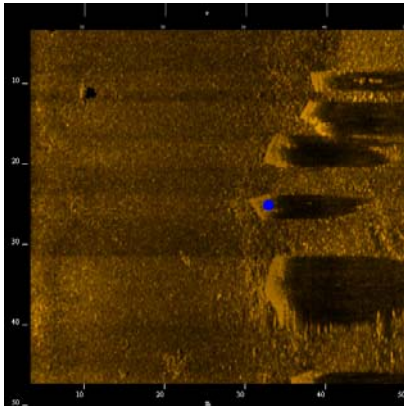


Asphalt0067

- Sonar Time at Target: 09/14/2009 15:16:10
- Click Position (Lat/Lon Coordinates)
37° 44.74628' N 076° 13.39618' W (WGS84)
37° 44.73843' N 076° 13.41631' W (NAD27)
- Click Position (Projected Coordinates)
(X) 392,228.40 (Y) 4,178,312.76
- Map Proj: WGS 1984 UTM, Zone 18 North, Meter
- Acoustic Source File:
I:\Virginia_MS_HD\20090914asphaltpilereef\FILE0001.sds
- Ping Number: 7154
- Range to Target: 33.60 Meters
- Fish Height: 3.84 Meters
- Heading: 0.00000000
- Event Number: 0
- Line Name: FILE0001

Dimensions

Target Height = 0 Meters
 Target Length: 0 Meters
 Target Shadow: 0 Meters
 Target Width: 0 Meters
 Mag Anomaly:
 Avoidance Area:
 Classification 1: Concrete Pipe
 Classification 2:
 Area: Asphalt Reef
 Block:
 Description:

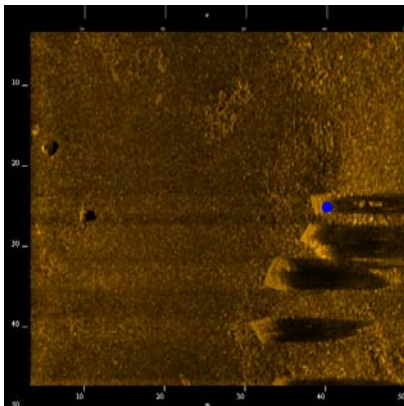


Asphalt0068

- Sonar Time at Target: 09/14/2009 15:16:13
- Click Position (Lat/Lon Coordinates)
37° 44.75176' N 076° 13.39688' W (WGS84)
37° 44.74391' N 076° 13.41700' W (NAD27)
- Click Position (Projected Coordinates)
(X) 392,227.51 (Y) 4,178,322.92
- Map Proj: WGS 1984 UTM, Zone 18 North, Meter
- Acoustic Source File:
I:\Virginia_MS_HD\20090914asphaltpilereef\FILE0001.sds
- Ping Number: 7197
- Range to Target: 32.43 Meters
- Fish Height: 3.84 Meters
- Heading: 0.00000000
- Event Number: 0
- Line Name: FILE0001

Dimensions

Target Height = 0 Meters
 Target Length: 0 Meters
 Target Shadow: 0 Meters
 Target Width: 0 Meters
 Mag Anomaly:
 Avoidance Area:
 Classification 1: Concrete Pipe
 Classification 2:
 Area: Asphalt Reef
 Block:
 Description:

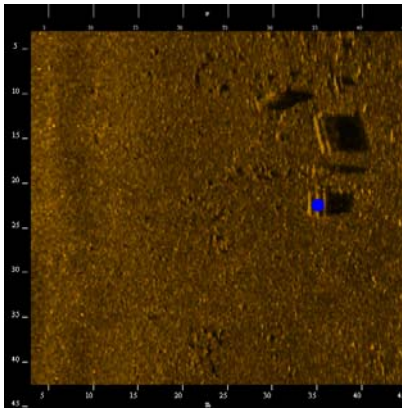


Asphalt0069

- Sonar Time at Target: 09/14/2009 15:16:18
- Click Position (Lat/Lon Coordinates)
37° 44.76003' N 076° 13.39180' W (WGS84)
37° 44.75217' N 076° 13.41193' W (NAD27)
- Click Position (Projected Coordinates)
(X) 392,235.16 (Y) 4,178,338.10
- Map Proj: WGS 1984 UTM, Zone 18 North, Meter
- Acoustic Source File:
I:\Virginia_MS_HD\20090914asphaltpilereef\FILE0001.sds
- Ping Number: 7262
- Range to Target: 39.74 Meters
- Fish Height: 3.85 Meters
- Heading: 0.00000000
- Event Number: 0
- Line Name: FILE0001

Dimensions

Target Height = 0 Meters
 Target Length: 0 Meters
 Target Shadow: 0 Meters
 Target Width: 0 Meters
 Mag Anomaly:
 Avoidance Area:
 Classification 1: Concrete Pipe
 Classification 2:
 Area: Asphalt Reef
 Block:
 Description:

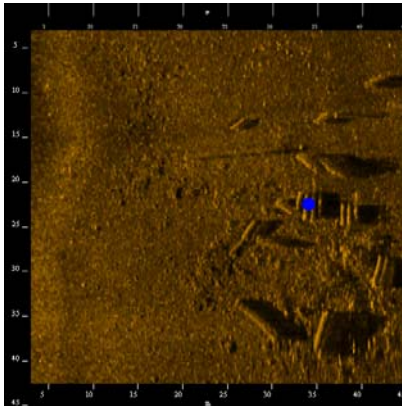


Asphalt0070

- Sonar Time at Target: 09/14/2009 16:01:47
- Click Position (Lat/Lon Coordinates)
37° 44.95788' N 076° 13.22278' W (WGS84)
37° 44.95004' N 076° 13.24290' W (NAD27)
- Click Position (Projected Coordinates)
(X) 392,488.13 (Y) 4,178,700.75
- Map Proj: WGS 1984 UTM, Zone 18 North, Meter
- Acoustic Source File:
I:\Virginia_MS_HD\20090914asphaltpilereef\FILE0002.sds
- Ping Number: 42975
- Range to Target: 34.42 Meters
- Fish Height: 6.05 Meters
- Heading: 0.00000000
- Event Number: 0
- Line Name: FILE0002

Dimensions

Target Height = 0 Meters
 Target Length: 0 Meters
 Target Shadow: 0 Meters
 Target Width: 0 Meters
 Mag Anomaly:
 Avoidance Area:
 Classification 1: Concrete Pipe
 Classification 2:
 Area: Asphalt Reef
 Block:
 Description:

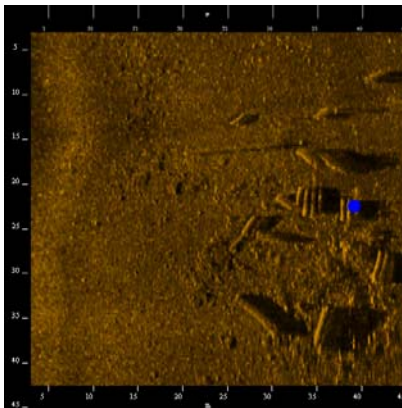


Asphalt0071

- Sonar Time at Target: 09/14/2009 16:01:58
- Click Position (Lat/Lon Coordinates)
37° 44.93843' N 076° 13.22147' W (WGS84)
37° 44.93059' N 076° 13.24160' W (NAD27)
- Click Position (Projected Coordinates)
(X) 392,489.58 (Y) 4,178,664.76
- Map Proj: WGS 1984 UTM, Zone 18 North, Meter
- Acoustic Source File:
I:\Virginia_MS_HD\20090914asphaltpilereef\FILE0002.sds
- Ping Number: 43123
- Range to Target: 33.39 Meters
- Fish Height: 5.87 Meters
- Heading: 0.00000000
- Event Number: 0
- Line Name: FILE0002

Dimensions

Target Height = 0 Meters
 Target Length: 0 Meters
 Target Shadow: 0 Meters
 Target Width: 0 Meters
 Mag Anomaly:
 Avoidance Area:
 Classification 1: Concrete Pipe
 Classification 2:
 Area: Asphalt Reef
 Block:
 Description:

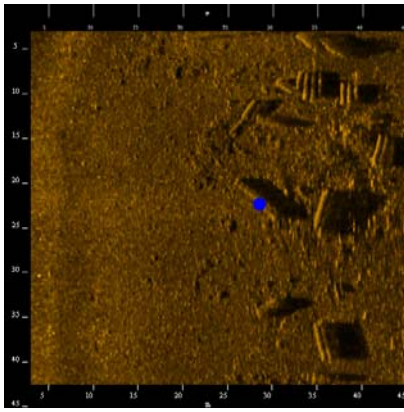


Asphalt0072

- Sonar Time at Target: 09/14/2009 16:01:57
- Click Position (Lat/Lon Coordinates)
37° 44.93880' N 076° 13.22499' W (WGS84)
37° 44.93095' N 076° 13.24511' W (NAD27)
- Click Position (Projected Coordinates)
(X) 392,484.43 (Y) 4,178,665.50
- Map Proj: WGS 1984 UTM, Zone 18 North, Meter
- Acoustic Source File:
I:\Virginia_MS_HD\20090914asphaltpilereef\FILE0002.sds
- Ping Number: 43120
- Range to Target: 38.55 Meters
- Fish Height: 5.78 Meters
- Heading: 0.00000000
- Event Number: 0
- Line Name: FILE0002

Dimensions

Target Height = 0 Meters
 Target Length: 0 Meters
 Target Shadow: 0 Meters
 Target Width: 0 Meters
 Mag Anomaly:
 Avoidance Area:
 Classification 1: Concrete Pipe
 Classification 2:
 Area: Asphalt Reef
 Block:
 Description:

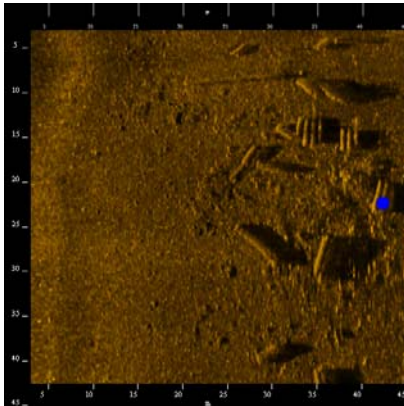


Asphalt0073

- Sonar Time at Target: 09/14/2009 16:01:54
- Click Position (Lat/Lon Coordinates)
37° 44.94564' N 076° 13.21782' W (WGS84)
37° 44.93779' N 076° 13.23794' W (NAD27)
- Click Position (Projected Coordinates)
(X) 392,495.13 (Y) 4,178,678.01
- Map Proj: WGS 1984 UTM, Zone 18 North, Meter
- Acoustic Source File:
I:\Virginia_MS_HD\20090914asphaltpilereef\FILE0002.sds
- Ping Number: 43069
- Range to Target: 27.81 Meters
- Fish Height: 5.87 Meters
- Heading: 0.00000000
- Event Number: 0
- Line Name: FILE0002

Dimensions

Target Height = 0 Meters
 Target Length: 0 Meters
 Target Shadow: 0 Meters
 Target Width: 0 Meters
 Mag Anomaly:
 Avoidance Area:
 Classification 1: Concrete Pipe
 Classification 2:
 Area: Asphalt Reef
 Block:
 Description:

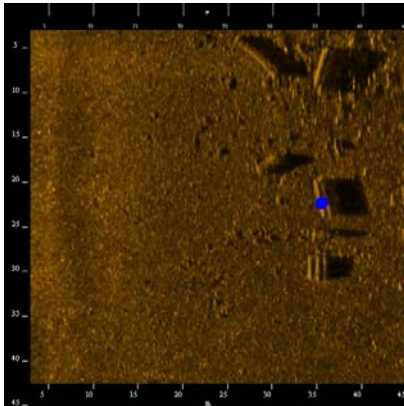


Asphalt0074

- Sonar Time at Target: 09/14/2009 16:01:55
- Click Position (Lat/Lon Coordinates)
37° 44.94272' N 076° 13.22725' W (WGS84)
37° 44.93488' N 076° 13.24738' W (NAD27)
- Click Position (Projected Coordinates)
(X) 392,481.20 (Y) 4,178,672.80
- Map Proj: WGS 1984 UTM, Zone 18 North, Meter
- Acoustic Source File:
I:\Virginia_MS_HD\20090914asphaltpilereef\FILE0002.sds
- Ping Number: 43090
- Range to Target: 41.77 Meters
- Fish Height: 5.78 Meters
- Heading: 0.00000000
- Event Number: 0
- Line Name: FILE0002

Dimensions

Target Height = 0 Meters
 Target Length: 0 Meters
 Target Shadow: 0 Meters
 Target Width: 0 Meters
 Mag Anomaly:
 Avoidance Area:
 Classification 1: Concrete Pipe
 Classification 2:
 Area: Asphalt Reef
 Block:
 Description:

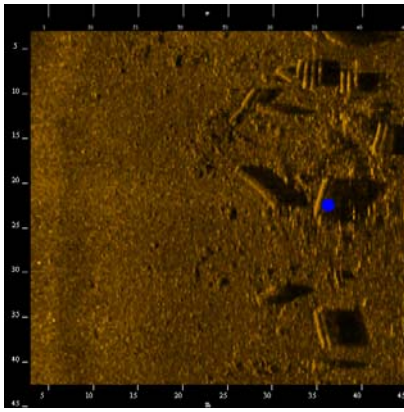


Asphalt0075

- Sonar Time at Target: 09/14/2009 16:01:49
- Click Position (Lat/Lon Coordinates)
37° 44.95396' N 076° 13.22289' W (WGS84)
37° 44.94611' N 076° 13.24301' W (NAD27)
- Click Position (Projected Coordinates)
(X) 392,487.88 (Y) 4,178,693.50
- Map Proj: WGS 1984 UTM, Zone 18 North, Meter
- Acoustic Source File:
I:\Virginia_MS_HD\20090914asphaltpilereef\FILE0002.sds
- Ping Number: 43005
- Range to Target: 34.84 Meters
- Fish Height: 6.22 Meters
- Heading: 0.00000000
- Event Number: 0
- Line Name: FILE0002

Dimensions

Target Height = 0 Meters
 Target Length: 0 Meters
 Target Shadow: 0 Meters
 Target Width: 0 Meters
 Mag Anomaly:
 Avoidance Area:
 Classification 1: Concrete Pipe
 Classification 2:
 Area: Asphalt Reef
 Block:
 Description:

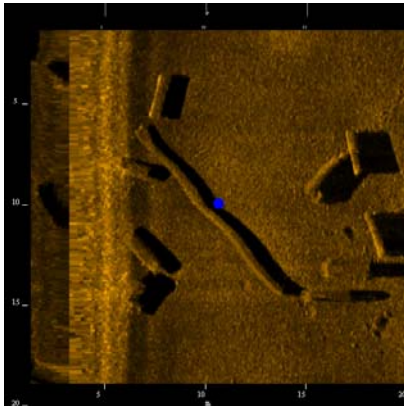


Asphalt0076

- Sonar Time at Target: 09/14/2009 16:01:54
- Click Position (Lat/Lon Coordinates)
37° 44.94634' N 076° 13.22311' W (WGS84)
37° 44.93850' N 076° 13.24323' W (NAD27)
- Click Position (Projected Coordinates)
(X) 392,487.37 (Y) 4,178,679.41
- Map Proj: WGS 1984 UTM, Zone 18 North, Meter
- Acoustic Source File:
I:\Virginia_MS_HD\20090914asphaltpilereef\FILE0002.sds
- Ping Number: 43063
- Range to Target: 35.55 Meters
- Fish Height: 6.05 Meters
- Heading: 0.00000000
- Event Number: 0
- Line Name: FILE0002

Dimensions

Target Height = 0 Meters
 Target Length: 0 Meters
 Target Shadow: 0 Meters
 Target Width: 0 Meters
 Mag Anomaly:
 Avoidance Area:
 Classification 1: Concrete Pipe
 Classification 2:
 Area: Asphalt Reef
 Block:
 Description:

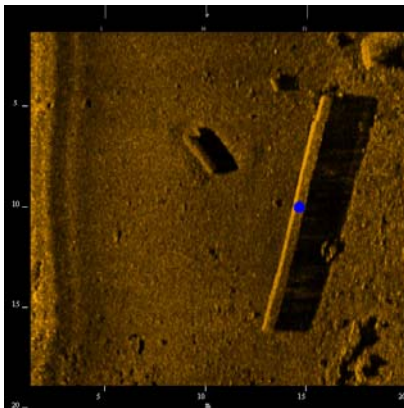


Asphalt0077

- Sonar Time at Target: 09/14/2009 16:15:54
- Click Position (Lat/Lon Coordinates)
37° 44.97281' N 076° 13.25122' W (WGS84)
37° 44.96497' N 076° 13.27134' W (NAD27)
- Click Position (Projected Coordinates)
(X) 392,446.74 (Y) 4,178,728.90
- Map Proj: WGS 1984 UTM, Zone 18 North, Meter
- Acoustic Source File:
I:\Virginia_MS_HD\20090914asphaltpilereef\FILE0002.sds
- Ping Number: 58951
- Range to Target: 6.76 Meters
- Fish Height: 2.99 Meters
- Heading: 0.00000000
- Event Number: 0
- Line Name: FILE0002

Dimensions

Target Height = 0 Meters
 Target Length: 0 Meters
 Target Shadow: 0 Meters
 Target Width: 0 Meters
 Mag Anomaly:
 Avoidance Area:
 Classification 1: Concrete Pipe
 Classification 2:
 Area: Asphalt Reef
 Block:
 Description:



Asphalt0078

- Sonar Time at Target: 09/14/2009 16:17:32
- Click Position (Lat/Lon Coordinates)
37° 44.93979' N 076° 13.22733' W (WGS84)
37° 44.93194' N 076° 13.24745' W (NAD27)
- Click Position (Projected Coordinates)
(X) 392,481.02 (Y) 4,178,667.38
- Map Proj: WGS 1984 UTM, Zone 18 North, Meter
- Acoustic Source File:
I:\Virginia_MS_HD\20090914asphaltpilereef\FILE0002.sds
- Ping Number: 61512
- Range to Target: 14.39 Meters
- Fish Height: 2.40 Meters
- Heading: 0.00000000
- Event Number: 0
- Line Name: FILE0002

Dimensions

Target Height = 0 Meters
 Target Length: 0 Meters
 Target Shadow: 0 Meters
 Target Width: 0 Meters
 Mag Anomaly:
 Avoidance Area:
 Classification 1: Concrete Pipe
 Classification 2:
 Area: Asphalt Reef
 Block:
 Description: